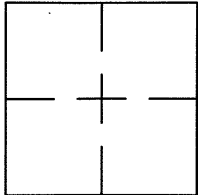


## CORNER RECORD

Document Number CR 9208City of EDEN TOWNSHIPCounty of ALAMEDA, CaliforniaBrief Legal Description BRASS DISC MONUMENT LOCATED WITHIN THE INTERSECTION OF  
CARSON LANE AND KIT LANE.

## CORNER RECORD

Government Corner ☐ Control ☒  
 Meander ☐ Property ☐  
 Rancho ☐ Other ☐  
 Date of Survey 10/26/16

COORDINATES  
(Optional)

N. 2085731  
 E. 6119017  
 Zone \_\_\_\_\_ Datum \_\_\_\_\_  
 Elev. \_\_\_\_\_

Corner — Left as found ☒ Found and tagged ☐ Established ☐ Reestablished ☐ Rebuilt ☐

Identification and type of corner found: Evidence used to identify or procedure used to establish or reestablish the corner:  
FOUND BRASS DISC WITH NIPPLE IN MONUMENT WELL.

SEE CR 8789

THIS POINT WAS FOUND IN GOOD CONDITION AFTER A CONSTRUCTION PROJECT IN THE VICINITY.

A description of the physical condition of the monument as found and as set or reset: \_\_\_\_\_

FOUND AND SET POINTS AS SHOWN ON PAGE 2.

THE TIES SHOWN HEREON ARE FOR THE PURPOSE OF PERPETUATING FOUND MONUMENTATION.

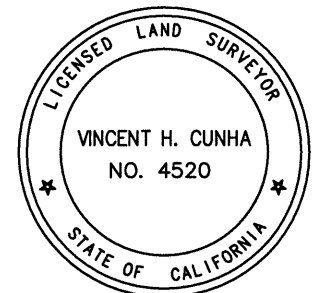
NO CLAIM IS MADE AS TO THE RELATIONSHIP OF THE POINTS OR LINES SHOWN HEREON TO

TRUE BOUNDARY LOCATIONS.

## SURVEYOR'S STATEMENT

This Corner Record was prepared by me or under my direction in conformance with  
 the Land Surveyors' Act on OCTOBER 27, 2016.

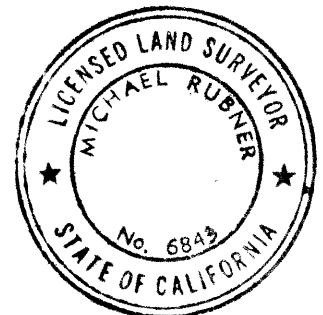
Signed Vincent H. Cunha L.S. Number LS 4520  
 VINCENT H. CUNHA



## COUNTY SURVEYOR'S STATEMENT

This Corner Record was received OCTOBER 31 2016 and examined  
 and filed 9 DECEMBER 2016.

Signed Michael Rubner Title COUNTY SURVEYOR



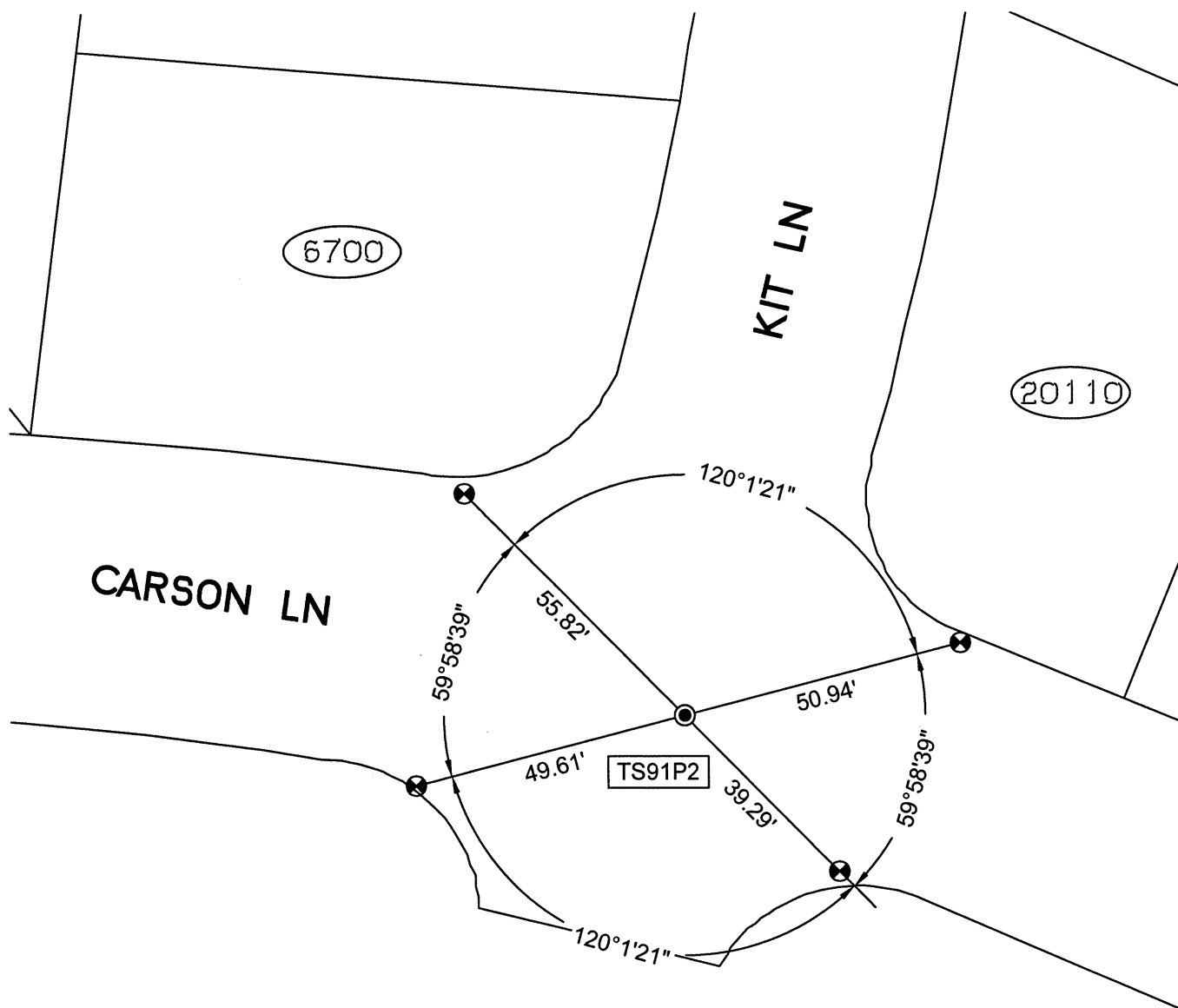
County Surveyor's Comment \_\_\_\_\_

SPEC 2304-POST

SCALE: 1"=30'

## LEGEND

- FOUND BRASS DISC WITH NIPPLE IN MONUMENT WELL
- ⊗ FOUND CUT CROSS IN WALK
- ✕ FOUND CUT CROSS IN CURB
- FOUND REBAR & CAP STAMPED "CEI RP"
- AA##A# ALAMEDA COUNTY MONUMENT ID
- 19592 REFERENCE STREET ADDRESS



216140-CR15 post