



Electric Bike

## D1 Structure illustration & folding instructions

Shenzhen QLHX Technology Co., Ltd.

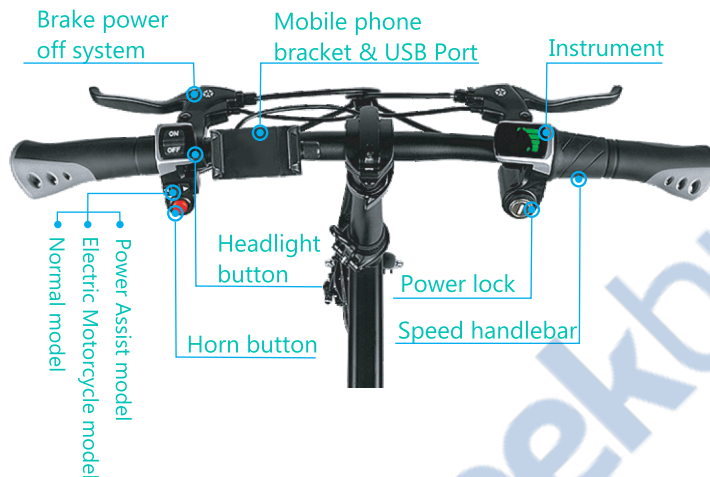
4/F, Building 2, No.13, Pingji Road, Longgang District, Shenzhen, Guangdong, China



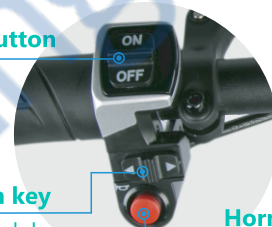
Made in China

# Structure illustration





**Headlight button**



**Mode switch key**

L: Normal model  
M: Electric Motorcycle model  
R: Power Assist model

**Horn button**



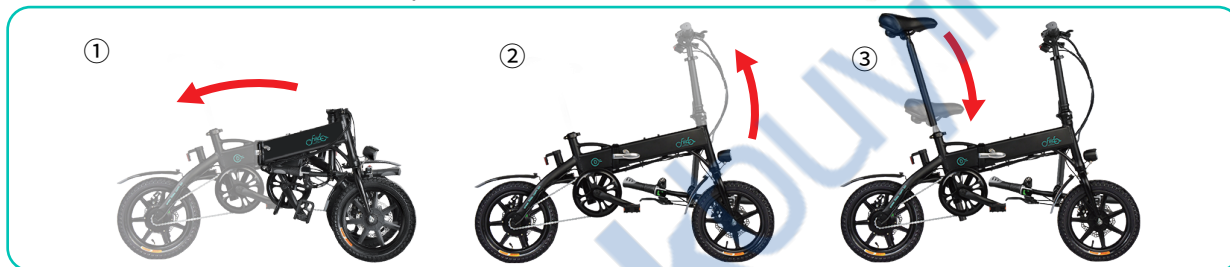
Hold and press with your fingers, folding the Pedal.



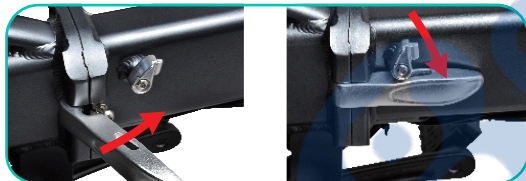
Battery charging port  
(located below the main beam of the frame)

# Unfolding instructions

1. Unfold the frame, lock the frame folding handle, and lock the frame folder safety clasp.
2. Fold the riser to the upper end, lock the riser folding handle, adjust the riser safety hook to the tightening state, and adjust the position of the T handle.
3. Open the clip on the seat tube clamp and insert the seat tube into the position within the marking line on the seat tube. Adjust the seat to the comfortable height according to individual needs, and fasten the seat tube clip.



Please confirm the following items before riding: frame lock, standpipe lock and seat tube lock are locked. Brake system is normal. Tires are adequately inflated. All these are important for a safe and comfortable riding.



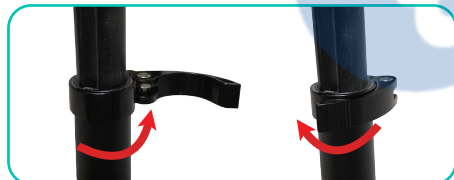
opened

locked



opened

locked



The insertion depth must be higher than the tick mark



Adjusting the handle

## Folding instructions

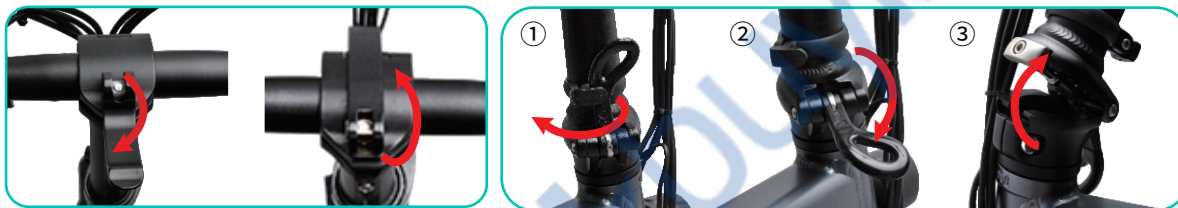
Step 1. Open the quick lock on the head end, to let the handle be perpendicular to the care frame.

Step 2. Open the quick lock on the Stem, lower the riser, as well as locking the quick lock.

Step 3. Open the Seat Tube quick lock, decentralized seats, as well as locking the quick lock.

Note:

Both the Riser and the Seat Tube are marked with a safe scale (MAX or MIN). For safety reasons, please use them in a safe range.



Step 4. Turn the buckle on the Standpipe clockwise and pull down the fold and fold down the front.

Step 5. Open the frame holder of the fuse buckle, pull the fold, and fold the frame.



## Product parameters

Name	Specification
Electric Bike System	FIIDO System
Electric Motorcycle	Support
Power Assist System	Support
Cell phone bracket	Support and add USB charging port
Max Load weight	120kg
Maximum Speed	25km/h
Maximum Range	up to 80km
Battery	High quality lion battery 36V 7.8/10.4Ah
Battery adaptation	DC 42V 2A
Recharge Time	7 hours
Display	LCD Display
Drive Type	Rear Drive
Frame Material	Aluminum Alloy
Front Brake	Mechanical Disc Brakes
Brake Type	Mechanical Disc Brakes
Chainset	Prowheel Steel 52 Tooth
Gears	12 Tooth
Chain	KMC S1 RB
Rear Brake	Mechanical Disc Brakes
Rear Hub / Rated Power	XiongDa Motor / 250W
Rims	Alloy
Wheel Size	14"
Tyre Size	14 x 2.125 inch
Tyres	Cheng Shin Tire
Net Weight	17.5 KG
Folded Size	75cm x 35cm x 65cm
Size	130cm x 40cm x 111cm

\* The above data allow for 5% manufacturing tolerances.

\* After receiving the goods, there may be some differences between individual accessories and display drawings, which are different due to the different batches, and do not affect the use.