

# CORNER RECORD

Agency Index

BOOK 105 PAGE 49

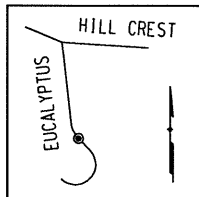
Document Number

CR 10954

City of OAKLANDCounty of ALAMEDA, California

Brief Legal Description

CITY OF BERKELEY (C.O.B.) MONUMENT B2884 AS SHOWN UPON MONUMENT MAP 1494B496\_331 AND EUCALYPTUS HILL CLAREMONT (20-MAPS-68) NORTHEASTERLY OF 33 EUCALYPTUS ROAD.

**CORNER TYPE****COORDINATES (Optional)**Government Corner ☐

Control

☒

Elevation

Meander ☐

Property

☐

Units

Metric ☐U.S. Survey Foot ☒Rancho ☐

Other

☐

Horizontal Datum

CCS 83

Zone 3

Epoch Date

Date of Survey 1/11/2018

Vertical Datum

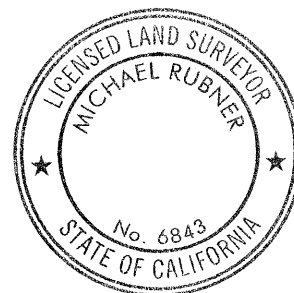
☐ Complies with Public Resources Code §§8801-8819☐ Complies with Public Resources Code §§8890-8902PLS Act Ref: ☐ 8765(d)☒ 8771☐ 8773☐ Other:Corner/  
Monument:☒ Left as found☐ Established☐ Rebuilt☒ Pre-Construction☐ Found and tagged☐ Reestablished☒ Referenced☐ Post-Construction

Narrative of corner identified and monument as found, set, reset, replaced, or removed:

☒ See sheet #2 for description(s):

FOUND MONUMENT THAT COULD BE DAMAGED OR DESTROYED BY A PROPOSED GAS LINE CONSTRUCTION PROJECT. MONUMENT WAS REFERENCED AS SHOWN ON PAGE 2 OF 2.

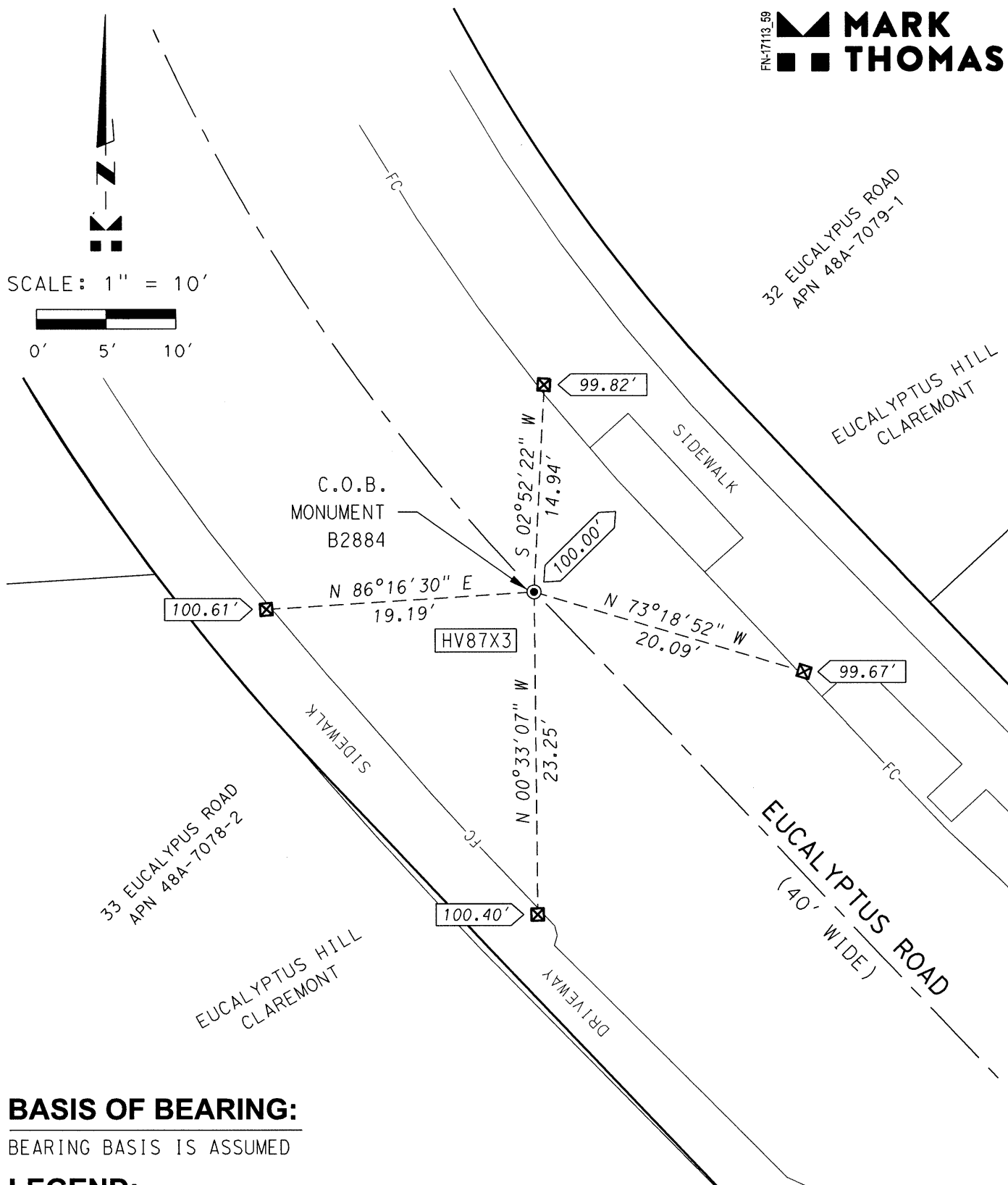
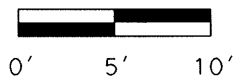
THE PURPOSE OF THIS CORNER RECORD IS TO PRESERVE THE LOCATION OF THE MONUMENT PRIOR TO CONSTRUCTION. NO ATTEMPT WAS MADE TO DETERMINE THE RELATIONSHIP BETWEEN THE MONUMENT AND PROPERTY LINES, RIGHT-OF-WAY LINES, CENTERLINES OR OTHER MONUMENTS.

**SURVEYOR'S STATEMENT**This Corner Record was prepared by me or under my direction in conformance with the Professional Land Surveyors' Act on FEBRUARY 20, 2018Signed EPAK P.L.S. or R.C.E. No. 8911**COUNTY SURVEYOR'S STATEMENT**This Corner Record was received 17 JANUARY 2018and examined and filed 6 MARCH 2018Signed Michael Rubner P.L.S. or R.C.E. No. 6843Title COUNTY SURVEYOR

County Surveyor's Comment

FN-17113\_59  
 **MARK THOMAS**

SCALE: 1" = 10'

**BASIS OF BEARING:**

BEARING BASIS IS ASSUMED

**LEGEND:**

FOUND 5/8" ROD IN WELL



SET CUT CROSS FOR REFERENCE POINT IN TOP OF CONCRETE CURB

100.00'

MONUMENT ELEVATION (ASSUMED)

xxx.xx'

REFERENCE POINT ELEVATION (ESTABLISHED USING A DIGITAL LEVEL)

HV87X3

ALAMEDA COUNTY MONUMENT IDENTIFICATION NUMBER