

CORNER RECORD

Agency Index

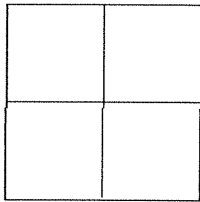
BK 128 PG 55

Document Number

CR 12794

City of BERKELEYCounty of ALAMEDA

, California

Brief Legal Description CITY OF BERKELEY MONUMENT B1617, LOCATED AT VERMONT AVENUE CUL DE SAC.**CORNER TYPE****COORDINATES (Optional)**

Government Corner ☐ Control ☒
Meander ☐ Property ☐
Rancho ☐ Other ☐

Date of Survey 1/25/19

N. _____ E. _____

Elevation _____

Units _____ Metric ☐ U.S. Survey Foot ☐

Horizontal Datum _____

Zone _____ Epoch Date _____

Vertical Datum _____

☐ Complies with Public Resources Code §§8801-8819☐ Complies with Public Resources Code §§8801-8902

PLS Act Ref.:

☐ 8765(d)☒ 8771☐ 8773☐ Other:Corner/
Monument:☐ Left as found☐ Established☐ Rebuilt☒ Pre-Construction☐ Found and tagged☐ Reestablished☒ Referenced☐ Post-Construction


Narrative of corner identified and monument as found, set, reset, replaced, or removed.

☒ See sheet #2 for description(s)**SURVEYOR'S STATEMENT**

This Corner Record was prepared by me or under my direction in conformance with

the Professional Land Surveyor's Act on JANUARY 28, 2019

Signed



P.L.S. or R.C.E. No.

8178**COUNTY SURVEYOR'S STATEMENT**

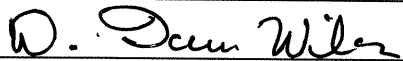
This Corner Record was received

FEB 26 2019

and examined and filed

NOV 18 2019

Signed



P.L.S. or R.C.E. No.

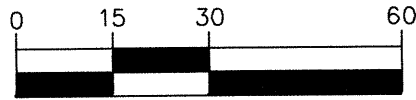
7010Title ALAMEDA COUNTY SURVEYOR

County Surveyor's Comment



KSR JOB# 19653-19-01

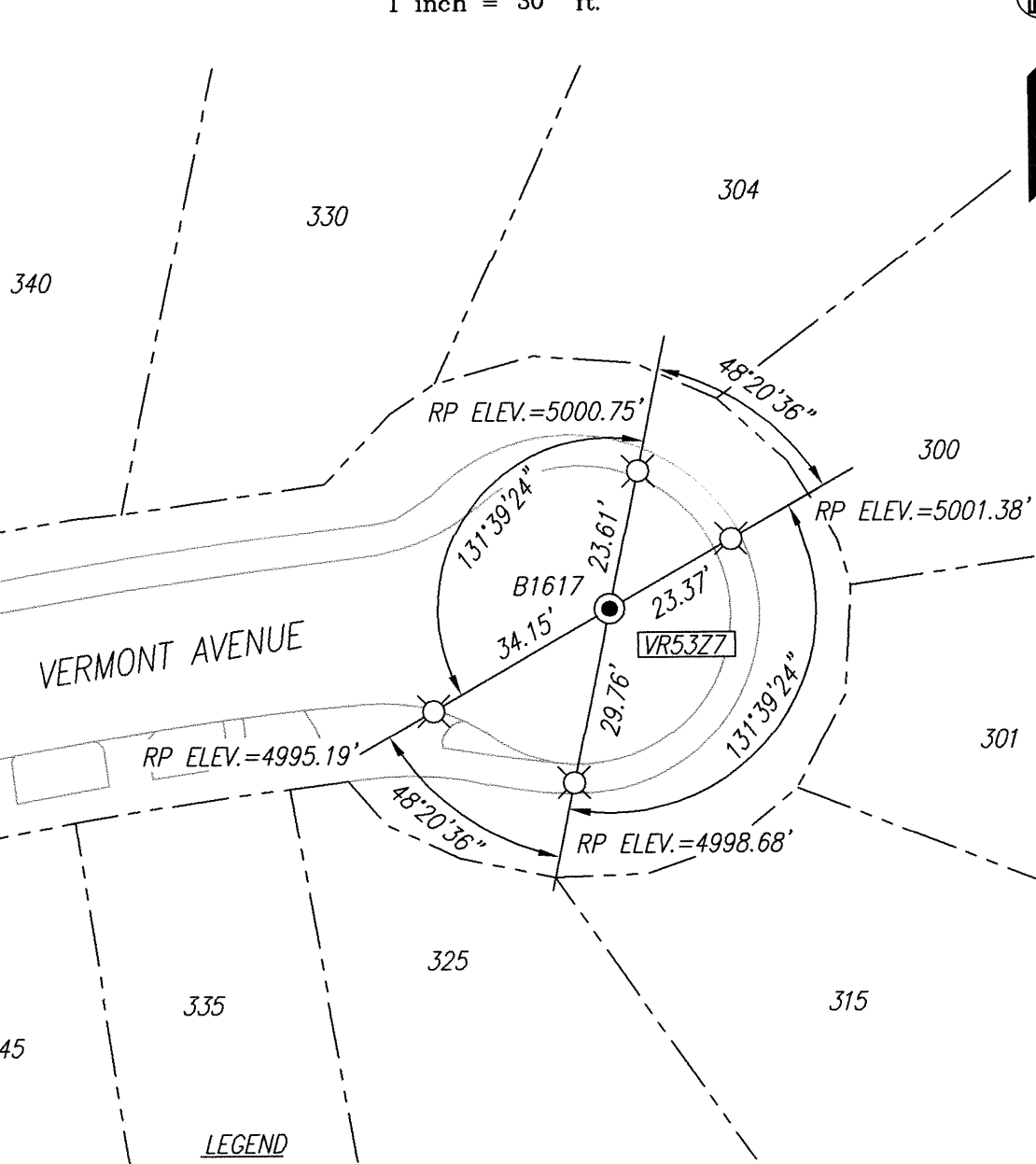
GRAPHIC SCALE



(IN FEET)
1 inch = 30 ft.



P:\projects\19653\19-01\DWGS\SURVEY\19653-19-01.dwg 10/28/19



LEGEND

● = FOUND CITY MONUMENT B1617; 1/2" IRON PIN, IN STANDARD WELL.
ELEVATION = 5000.00' ASSUMED DATUM

⊗ = SET SET MAG NAIL REFERENCE POINT (RP)

AA ## A# = ALAMEDA COUNTY MONUMENT I.D.

NOTE: RP ELEVATIONS ESTABLISHED BY DIFFERENTIAL LEVELING
UTILIZING A SOKKIA SDL30 DIGITAL LEVEL.