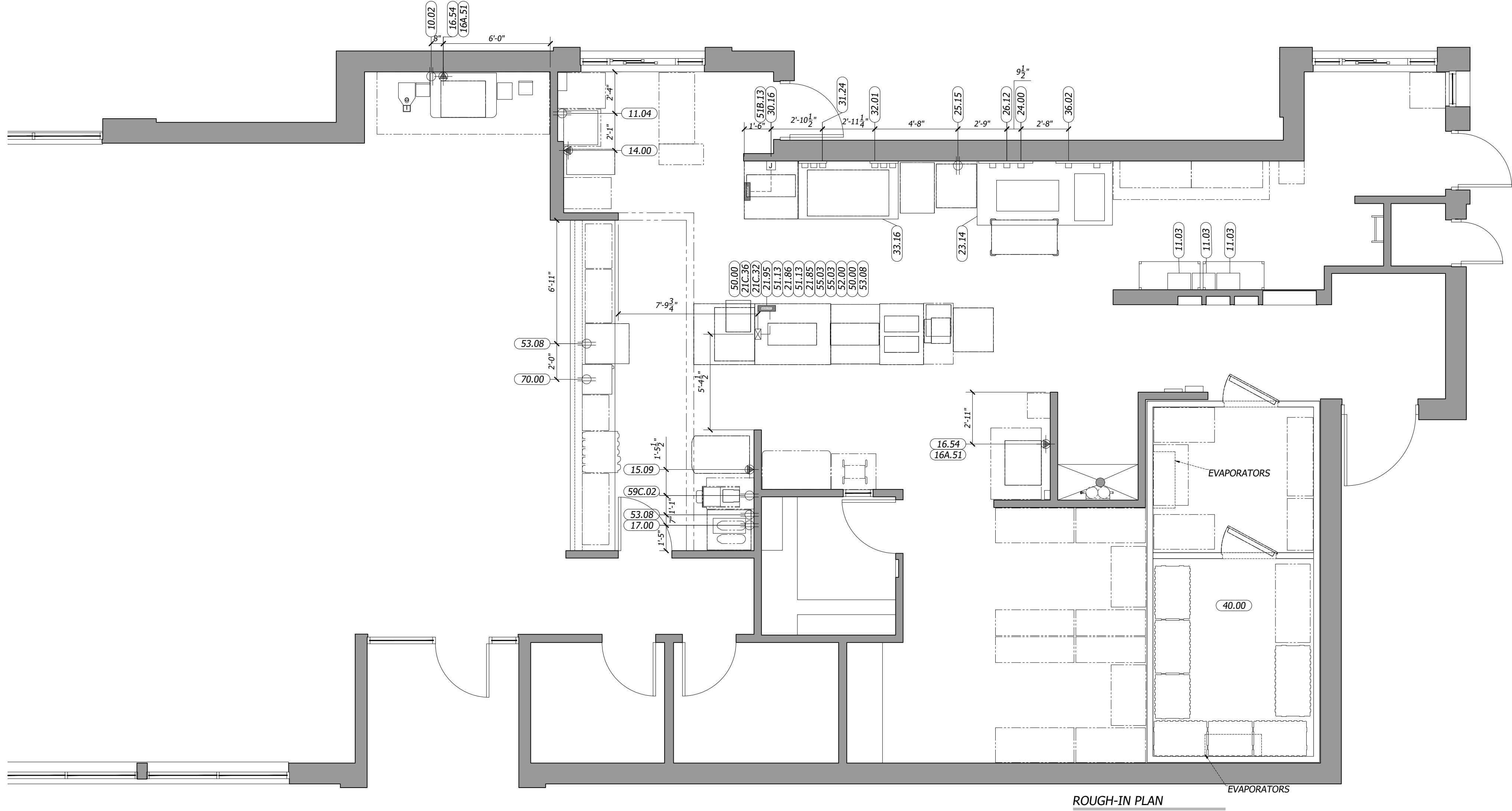


| ELECTRICAL SCHEDULES |     |   |                  |        |            |  |
|----------------------|-----|---|------------------|--------|------------|--|
| ITEM#                | QTY | DESCRIPTION                                   | 110-127V/PH/60HZ | AMPS   | AFF_(IN)   | ELECTRICAL_REMARKS   |
| 10.02                | 1   | 12 V SODA SYSTEM W/ICE                        | 115V/1/60HZ      | 5.2    | 18         | -  |
| 11.03                | 3   | CARBONATOR, HIGH VOLUME                       | 115/1/60HZ       | 7.2    | 84         | -  |
| 11.04                | 1   | DROP IN DISPENSER 8V CB2323                   | 115/1/60HZ       | 1.5    | 18         | -  |
| 14.00                | 1   | FROZEN COKE MACHINE                           | VERIFY           | VERIFY | VERIFY     | VERIFY UTILITY REQUIREMENTS WITH OWNER PROVIDED EQUIPMENT  |
| 15.09                | 1   | SHAKE & SOFT SERVE                            | VERIFY           | VERIFY | VERIFY     | VERIFY UTILITY REQUIREMENTS WITH OWNER PROVIDED EQUIPMENT  |
| 16.54                | 2   | ICE MACHINE 882LB                             | 208-230V/1/60HZ  | 11     | 60         | 15A MAX. FUSE SIZE   |
| 16A.51               | 2   | REMOTE CONDENSER                              | 208-230V/1/60HZ  | 10     | -          | 15A MAX. FUSE SIZE/POWER SUPPLY FOR REMOTE CONDENSER DRAWN FOR ICE MAKER, EC TO CONNECT / VERIY LOCATION OF REMOTE CONDENSER |
| 17.00                | 1   | COFFEE/ TEA BREWER                            | 120/208V/1/60    | 13     | 50         | -  |
| 21.85                | 1   | BK MIDDLE PREP TABLE (BUN RACK)               | -                | -      | -          | EC TO PLUG TABLES TOGETHER   |
| 21.86                | 1   | BK REAR PREP TABLE (REFRIG UNDERCOUNTER)      | -                | -      | -          | EC TO PLUG TABLES TOGETHER   |
| 21.95                | 1   | BK FRONT PREP TABLE                           | 120/208V/3/60HZ  | 125    | FR/CEILING | EC TO PLUG TABLES TOGETHER AND TO CONNECT BREAKER PANEL IN TABLE TO MAIN PANEL   |
| 21C.32               | 1   | BK EXPEDITER STATION                          | 120V/1/60HZ      | 6      | -          | CONNECT TO PRE-WIRED TO RECEPTACLE IN PREP TABLE (#21)   |
| 21C.36               | 1   | BK ECONO LINE BEVERAGE REFRIGERATOR           | 120V/1/60HZ      | 2      | -          | CONNECT TO PRE-WIRED TO RECEPTACLE IN PREP TABLE (#21) 15A MAX. FUSE SIZE  |
| 23.14                | 1   | 7'-7" BROILER/OVEN HOOD ROC STORES            | -                | -      | -          | EC TO INTER-CONNECT FANS TO CONTROL PANEL AND ANSUL SYSTEM/ VERIFY WITH HOOD DRAWINGS  |
| 24.00                | 1   | BROILER                                       | VERIFY           | VERIFY | -          | VERIFY UTILITY REQUIREMENTS WITH OWNER PROVIDED EQUIPMENT  |
| 25.15                | 1   | FREEZER, REACH-IN RH                          | 115V/1/60HZ      | 6.5    | 48         | 15A DEDICATED CIRCUIT REQUIRED   |
| 26.12                | 1   | MEAT FREEZER 44"                              | 115V/1/60HZ      | 5.1    | -          | CORD & PLUG/ CONNECT TO RECEPTACLE PROVIDED UNDER HOOD/ REFER TO HOOD DRAWINGS   |
| 30.16                | 1   | UNIVERSAL FRY DUMP STATION S/SNEXT GENERATION | 120-208V/1/60HZ  | 30     | 18         | CIRCUIT 1 FRY DUMP: (120-208V/1/60HZ, 10A, 3 WIRE + GROUND), CIRCUIT 2 PHU: (208V/1/60HZ, 12A 2 WIRE + GROUND)               |
| 31.24                | 1   | 3 VAT FRYER GAS                               | 115V/1/60HZ      | 8      | -          | CORD & PLUG/ CONNECT TO RECEPTACLE PROVIDED UNDER HOOD/ REFER TO HOOD DRAWINGS   |
| 32.01                | 1   | FRY FREEZER W/RACK & TRAY                     | 115V/1/60HZ      | 5.3    | -          | CORD & PLUG/ CONNECT TO RECEPTACLE PROVIDED UNDER HOOD/ REFER TO HOOD DRAWINGS   |
| 33.16                | 1   | 5'-7" FRYER HOOD WALL MOUNT                   | -                | -      | -          | EC TO CONNECT RECEPTACLES AND INTER-CONNECT FANS TO CONTROL PANEL AND ANSUL SYSTEM/ VERIFY WITH HOOD DRAWINGS                |
| 36.02                | 1   | COMBI OVEN STEAMER ELECTRIC                   | 208V/3/60HZ      | 20     | -          | EC TO CONNECT TO RECEPTCLE UNDER HOOD / VERIFY WITH OWNER & HOOD DRAWINGS  |
| 40.00                | 1   | WALK-IN COOLER/FREEZER                        | -                | -      | -          | VERIFY UTILITY REQUIREMENTS WITH OWNER PROVIDED EQUIPMENT  |
| 50.00                | 2   | MICROWAVE OVEN                                | 208-240V/1/60HZ  | 15.3   | -          | CONNECT TO PRE-WIRED TO RECEPTACLE IN EXPEDITER (#21C) OR PREP TABLE (#21)   |
| 51.13                | 2   | PHU - 3X4                                     | 208V/1/60HZ      | 16     | -          | CONNECT TO PRE-WIRED TO RECEPTACLE IN PREP TABLE (#21)   |
| 51B.13               | 1   | PHU - 2X4                                     | 208V/1/60HZ      | 12     | -          | CONNECT TO PRE-WIRED TO RECEPTACLE IN FRY DUMP (#30)   |
| 52.00                | 1   | EGG COOKER                                    | 208V/1/60HZ      | 11.4   | -          | CONNECT TO PRE-WIRED TO RECEPTACLE IN PREP TABLE (#21)   |
| 53.08                | 1   | UNDERCOUNTER REFRIG                           | 115V/1/60HZ      | 2.7    | -          | CONNECT TO PRE-WIRED TO RECEPTACLE IN PREP TABLE (#21)   |
| 53.08                | 1   | UNDERCOUNTER REFRIG                           | 115V/1/60HZ      | 4.5    | 18         | -  |
| 53.08                | 1   | UNDERCOUNTER REFRIG                           | 115V/1/60HZ      | 2.7    | 18         | -  |



GENERAL ELECTRICAL CONTRACTOR NOTES

- E. C. TO PROVIDE AND INSTALL RECEPTACLES, CAPS AND CORDS AS REQUIRED. CAPS AND CORDS ARE TO BE INSTALLED ACCORDING TO THE MANUFACTURER'S INSTRUCTIONS.
- E. C. TO CONNECT ELECTRICAL SERVICE DIRECTLY TO EQUIPMENT ACCORDING TO THE MANUFACTURER'S INSTRUCTIONS.
- E. C. TO RECONNECT ELECTRICAL CIRCUITS ON PREWIRED EQUIPMENT DISASSEMBLED FOR SHIPMENT.
- WHERE EQUIPMENT IS NOT PREWIRED, E. C. TO CONNECT THE ELECTRICAL SERVICE AND PROVIDE INTERWIRING AS REQUIRED.
- WHERE RECEPTACLES ARE PROVIDED WITH THE EQUIPMENT, D. C. TO PROVIDE AND INSTALL ELECTRICAL SERVICE DOWN FROM ABOVE THROUGH THE SERVICE CHASE PROVIDED WITH THE EQUIPMENT.
- H&K's DRAWINGS INCLUDE ONLY THOSE RECEPTACLES REQUIRED FOR SPECIFIC KITCHEN EQUIPMENT. REFER TO THE ARCHITECTURAL BUILDING DRAWINGS FOR LOCATIONS OF UTILITY AND GENERAL PURPOSE RECEPTACLES.
- E. C. TO VERIFY THE UTILITY REQUIREMENTS FOR ITEMS NOT PROVIDED BY H&K.
- ALL PORTIONS OF WORK SHALL BE DONE IN ACCORDANCE WITH APPLICABLE LOCAL, STATE AND NATIONAL CODES, ORDINANCES AND STANDARDS.
- NOTIFY H&K'S PROJECT MANAGER IMMEDIATELY IF COMPLIANCE WITH A LOCAL, STATE OR NATIONAL CODE IS IN CONFLICT WITH THESE DRAWINGS.
- ELECTRICALLY OPERATED OR HEATED EQUIPMENT SHALL BEAR THE U. L. OR R. U. SEAL.
- ALL 120V CONTROL WIRING TO BE DONE BY THE E. C.
- ALL CUSTOM FABRICATION EQUIPMENT WITH FACTORY WIRING SHALL BEAR THE U. L. LABEL AND FILE NO. FOR THE ENTIRE ITEM.
- EACH DOUBLE CONVENIENCE OUTLET TO BE WIRED TO 20A BREAKER.

WALK-IN COOLER/FREEZER ELECTRICAL CONTRACTOR NOTES

- E. C. TO PROVIDE AND INSTALL A HEATING ELEMENT ON THE COOLER/FREEZER CONDENSATE DRAIN LINES.
- E. C. TO CONNECT THE PRIMARY ELECTRICAL SERVICE TO THE CONDENSING UNITS AND INTERWIRE TO THE EVAPORATOR COIL(S), CONTROLS, LIGHTING FIXTURES AND DOOR PERIMETER HEATERS.

ABBREVIATIONS

A. F. C. ABOVE FINISHED CEILING  
A. F. F. ABOVE FINISHED FLOOR  
A. F. R. ABOVE FINISHED ROOF  
B. F. C. BELOW FINISHED CEILING  
WIB WALK-IN BOX (COOLER/FREEZER)

DISCLAIMER

IMPORTANT NOTICE: TO ALL CONTRACTORS AND TRADES

THESE DRAWINGS HAVE BEEN PREPARED BY H&K INTERNATIONAL AT THE REQUEST OF THE OWNER. THE INFORMATION PROVIDED MAY BE TIME SENSITIVE AND IS SUBJECT TO CHANGE AS REVISIONS TO THE EQUIPMENT LISTING MAY HAVE OCCURRED AFTER THE RELEASE OF THIS DRAWING.

PLEASE VERIFY WITH THE OWNER THAT THE DRAWING PROVIDED REFLECTS THE MOST CURRENT INFORMATION AVAILABLE. ALSO REQUEST A LIST OF ALL OWNER SUPPLIED EQUIPMENT AND EQUIPMENT SUPPLIED BY 'OTHERS' WITH DETAILS AND SPECIFICATIONS THAT APPLY TO THIS EQUIPMENT.

H&K INTERNATIONAL DOES NOT ASSUME RESPONSIBILITY FOR EQUIPMENT SUPPLIED BY OTHER PARTIES.

H&K INTERNATIONAL 103014

SYMBOL LEGEND

|  |                         |  |                                       |
|--|-------------------------|--|---------------------------------------|
|  | RECEPTACLES             |  | EXISTING FULL WALL                    |
|  | JUNCTION BOX            |  | EXISTING LOW WALL                     |
|  | EXHAUST DUCT ABOVE HOOD |  | NEW FULL WALL                         |
|  | GAS LINE                |  | NEW LOW WALL                          |
|  | WATER LINE              |  | OPTIONAL EQUIPMENT                    |
|  | DRAIN LINE              |  | NEW EQUIPMENT ON EQUIPMENT PLAN       |
|  | FLOOR SINK              |  | RELOCATED EQUIPMENT ON EQUIPMENT PLAN |
|  | FLOOR DRAIN             |  | EXISTING EQUIPMENT                    |
|  |                         |  | EQUIPMENT ON ROUGH-IN PLAN            |
|  |                         |  | EXISTING TRUSSES                      |
|  |                         |  | SERVICE AREA                          |
|  |                         |  | NEW MENU BOARD VALANCE                |

H & K DALLAS INC.  
2200 SKYLINE DR  
MESQUITE, TEXAS 75149  
(214) 818-5500

|               |            |             |                 |
|---------------|------------|-------------|-----------------|
| BY            |            |             |                 |
| REVISION      |            |             |                 |
| DATE          |            |             |                 |
| DATE: 22JAN20 | DRAWN: JTO | CHECKED: IB | SCALE: SEE PLAN |

CUSTOMER: BURGER-KING CORPORATION

TITLE: ELECTRICAL\_ROUGH\_INS

MERIDIAN, MS

THESE DRAWINGS SPECIFICATIONS ARE THE PROPERTY OF H&K AND SHALL NOT BE REPRODUCED OR COPIED WITHOUT H&K'S WRITTEN PERMISSION.

STORE NO: 00636

SHEET: 3 OF 4

SHEET NO: K-3