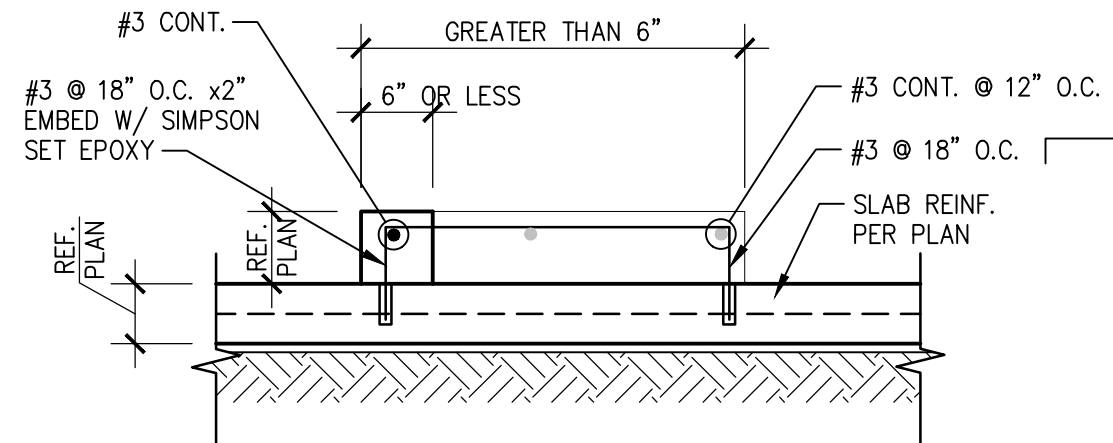
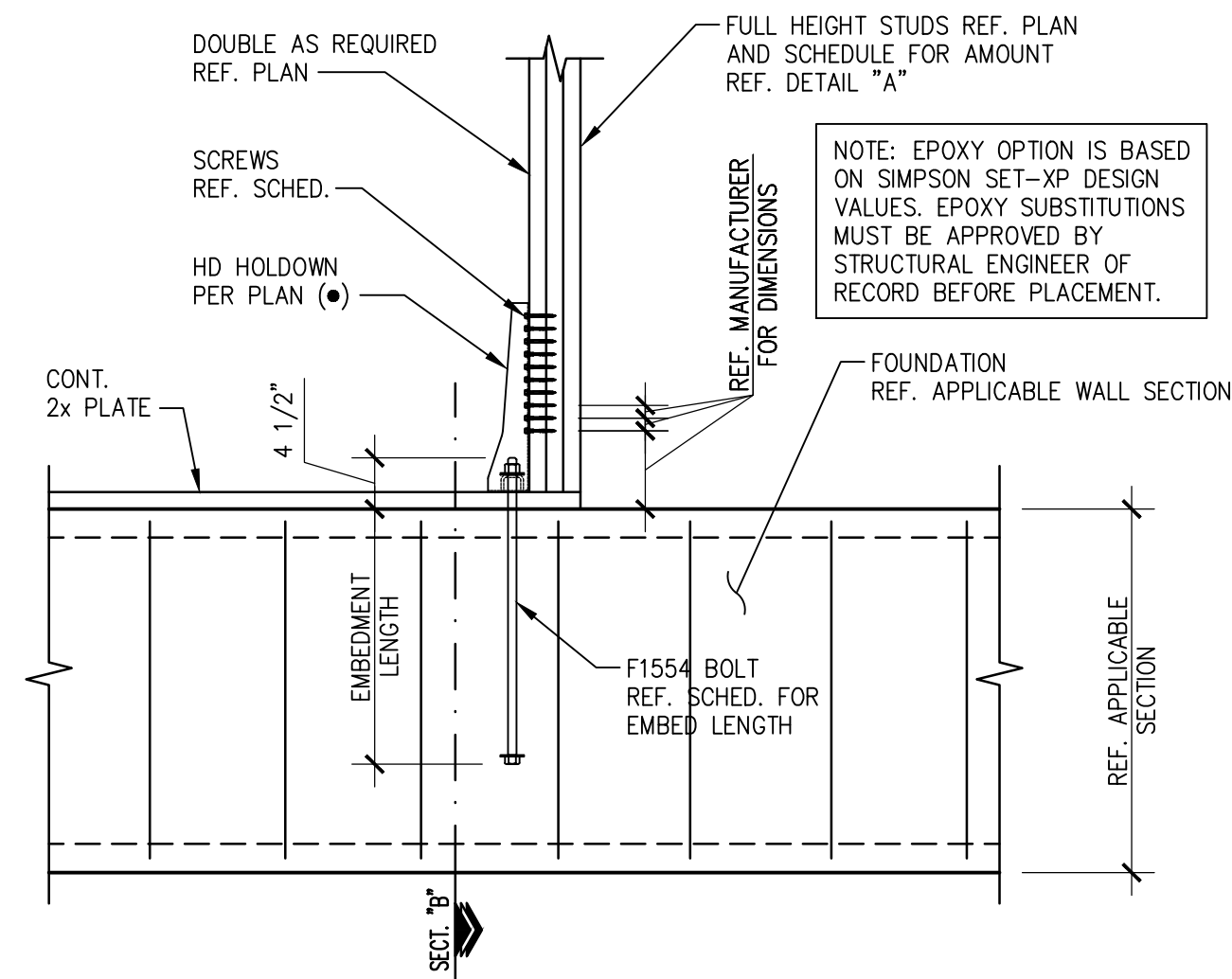


01 TYP. PENETRATION THRU FOOTINGS OR GRADE BEAMS
SCALE: 3/4"=1'-0"

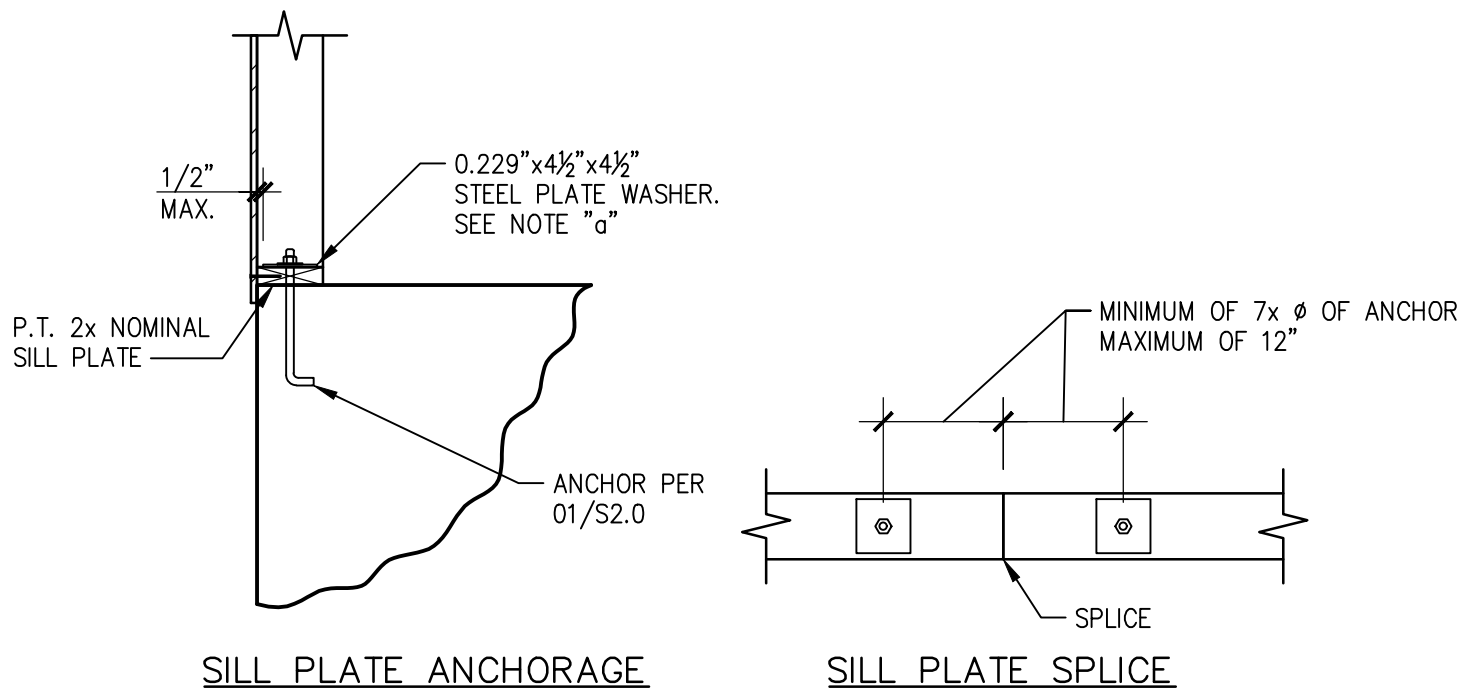


02 TYP. CURB
SCALE: 3/4"=1'-0"



HOLDOWN	POST/2x	BOLT/SCREW #	ANCH. BOLT	EDGE DISTANCE	CAST IN PLACE REQUIREMENTS	EPOXY OPTION REQUIREMENTS
HDU5-SDS2.5	3	(14) SDS 1/2"x2 1/2"	3/8" Ø	14"	1'-0"	1'-0"
HDU8-SDS2.5	3	(20) SDS 1/2"x2 1/2"	7/8" Ø	14"	1'-0"	1'-0"
HDU11-SDS2.5	4x6	(30) SDS 1/2"x2 1/2"	1" Ø	16"	1'-2"	1'-4"
HDU14-SDS2.5	6x6	(36) SDS 1/2"x2 1/2"	1" Ø	16"	1'-2"	1'-4"

03 TYP. HOLDOWN DETAIL
SCALE: 3/4"=1'-0"



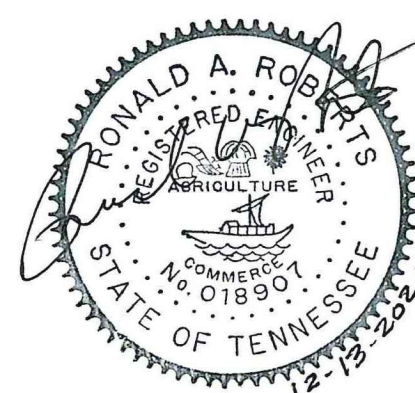
04 TYP. SILL PLATE ANCHORAGE
SCALE: 3/4"=1'-0"

BAR SIZE	STRAIGHT BARS		HOOKED BARS
	"TOP" BAR	OTHER BAR	
3	1'-10"	1'-5"	0'-9"
4	2'-5"	1'-10"	0'-11"
5	3'-0"	2'-4"	1'-2"
6	3'-7"	2'-9"	1'-5"
7	5'-3"	4'-0"	1'-8"
8	6'-0"	4'-7"	1'-10"
9	6'-8"	5'-2"	2'-1"
10	7'-5"	5'-9"	2'-4"
11	8'-2"	6'-4"	2'-6"

GRADE 60 REINFORCEMENT. MINIMUM LENGTHS SHOWN ABOVE SHALL BE USED UNLESS OTHERWISE NOTED ON THE PLANS. "TOP" BARS ARE HORIZONTAL BARS PLACED SUCH THAT MORE THAN 12 INCHES OF FRESH CONCRETE IS CAST IN THE MEMBER BELOW THE BAR.

BAR SIZE	SPACING 6" OR GREATER		SPACING LESS THAN 6"	
	"TOP" BAR	OTHER BAR	"TOP" BAR	OTHER BAR
3	2'-5"	1'-10"	2'-11"	2'-3"
4	3'-2"	2'-5"	3'-10"	2'-11"
5	3'-11"	3'-1"	4'-9"	3'-9"
6	4'-8"	3'-7"	5'-8"	4'-4"
7	6'-10"	5'-3"	8'-3"	6'-4"
8	7'-10"	6'-0"	9'-5"	7'-3"
9	8'-8"	6'-9"	10'-5"	8'-2"
10	9'-8"	7'-6"	11'-8"	9'-0"
11	10'-8"	8'-3"	12'-10"	9'-11"

GRADE 60 REINFORCEMENT. MINIMUM LENGTHS SHOWN ABOVE SHALL BE USED UNLESS OTHERWISE NOTED ON THE PLANS. "TOP" BARS ARE HORIZONTAL BARS PLACED SUCH THAT MORE THAN 12 INCHES OF FRESH CONCRETE IS CAST IN THE MEMBER BELOW THE BAR.



Ronald A. Roberts
Associates, Inc.
Consulting Engineers
2948 N. Stemmons Freeway
Dallas, Texas 75247-6103
Phone: (214) 637-6299
www.rare.net

JOHN FRANZ
architect
4055 International Plaza Suite 100
Fort Worth, Texas 76109
(817) 737-9922

STRICKLAND BROTHERS
TBD NEW SALEM HWY
MURFREESBORO, TN

Revisions:

File Name: 21286
Project No: 21286
Date: 12/13/21
Drawn By:
Checked By:

SHEET

S2.1

FOUNDATION DETAILS