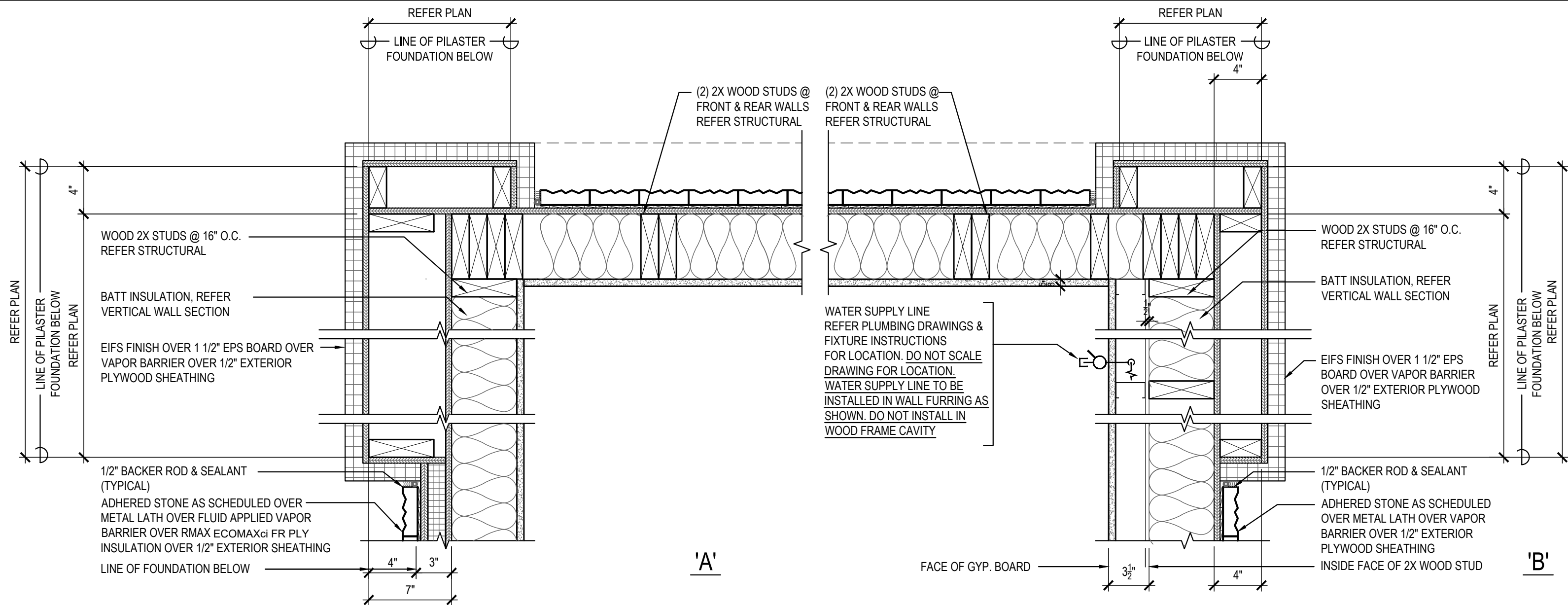
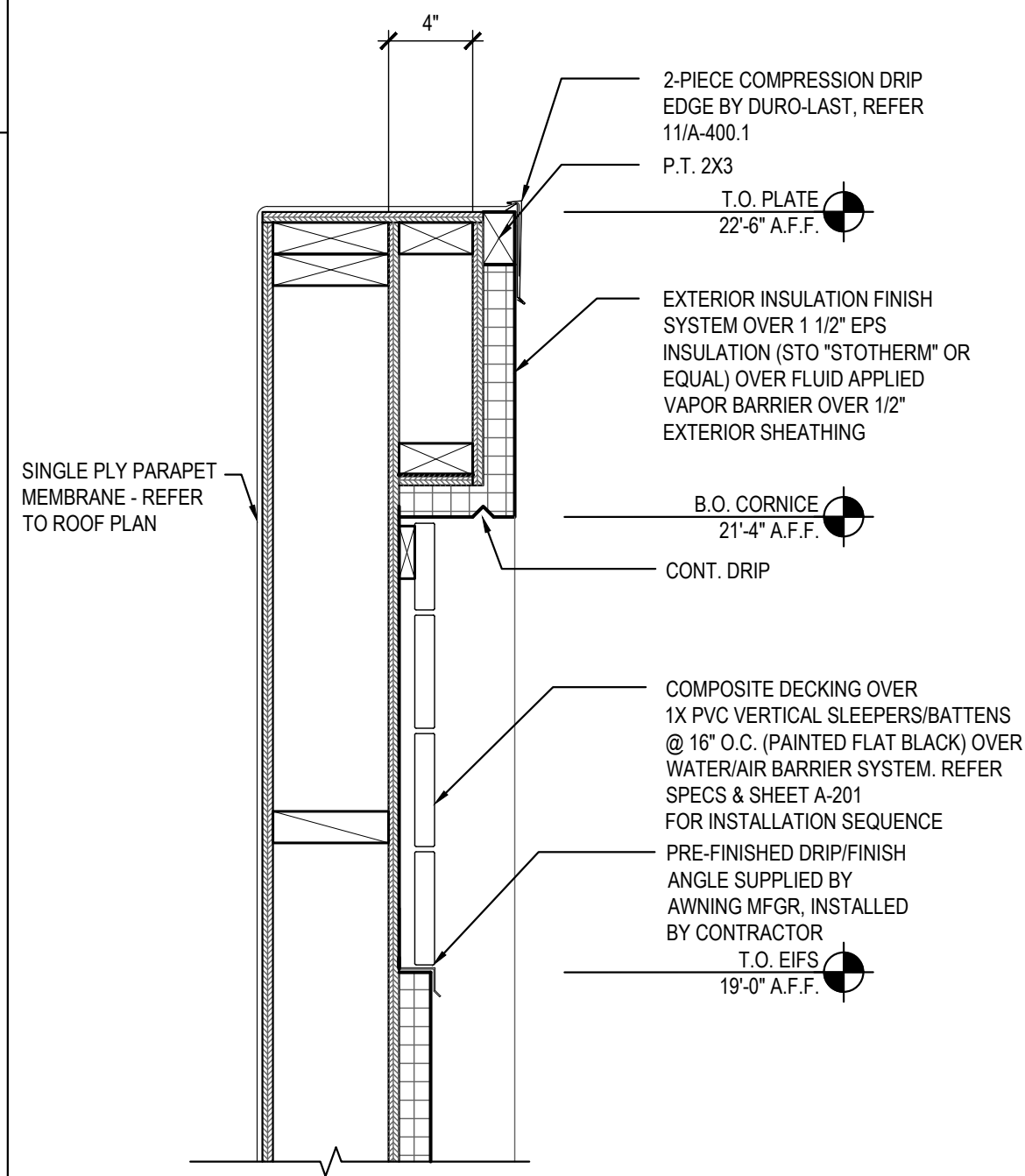


D:\Chicago-Jobs\Panda\IN\S8-21-D8044 - IN, Greenfield, State St & New Rd\3-A&E\2-CDs\CAD\A-400.2_Architectural Details-2300_True Warm and Welcome.DWG, 5/6/2021 1:44:38 PM, AutoCAD PDF (General Documentation).pc3



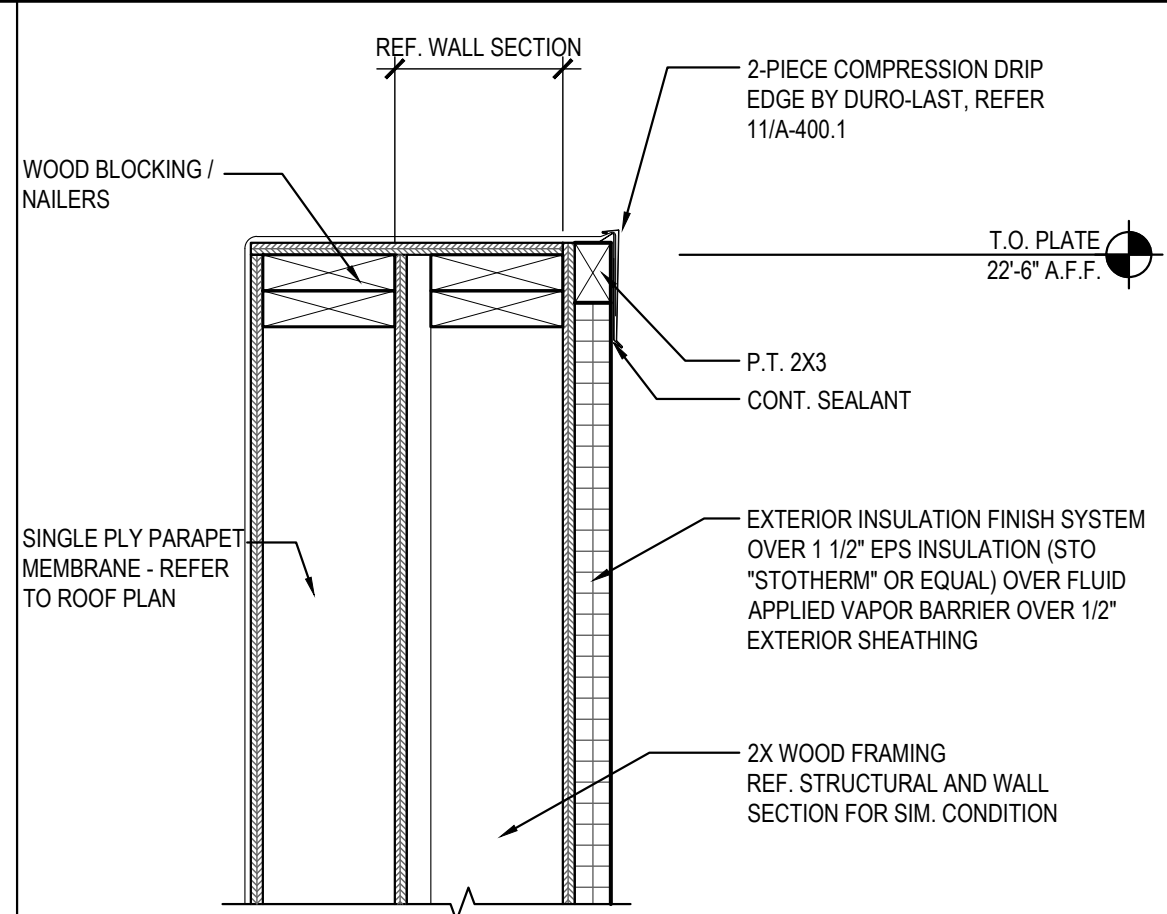
PLAN SECTION/DETAIL 07

Scale= 1 1/2" = 1'-0" A-400.2



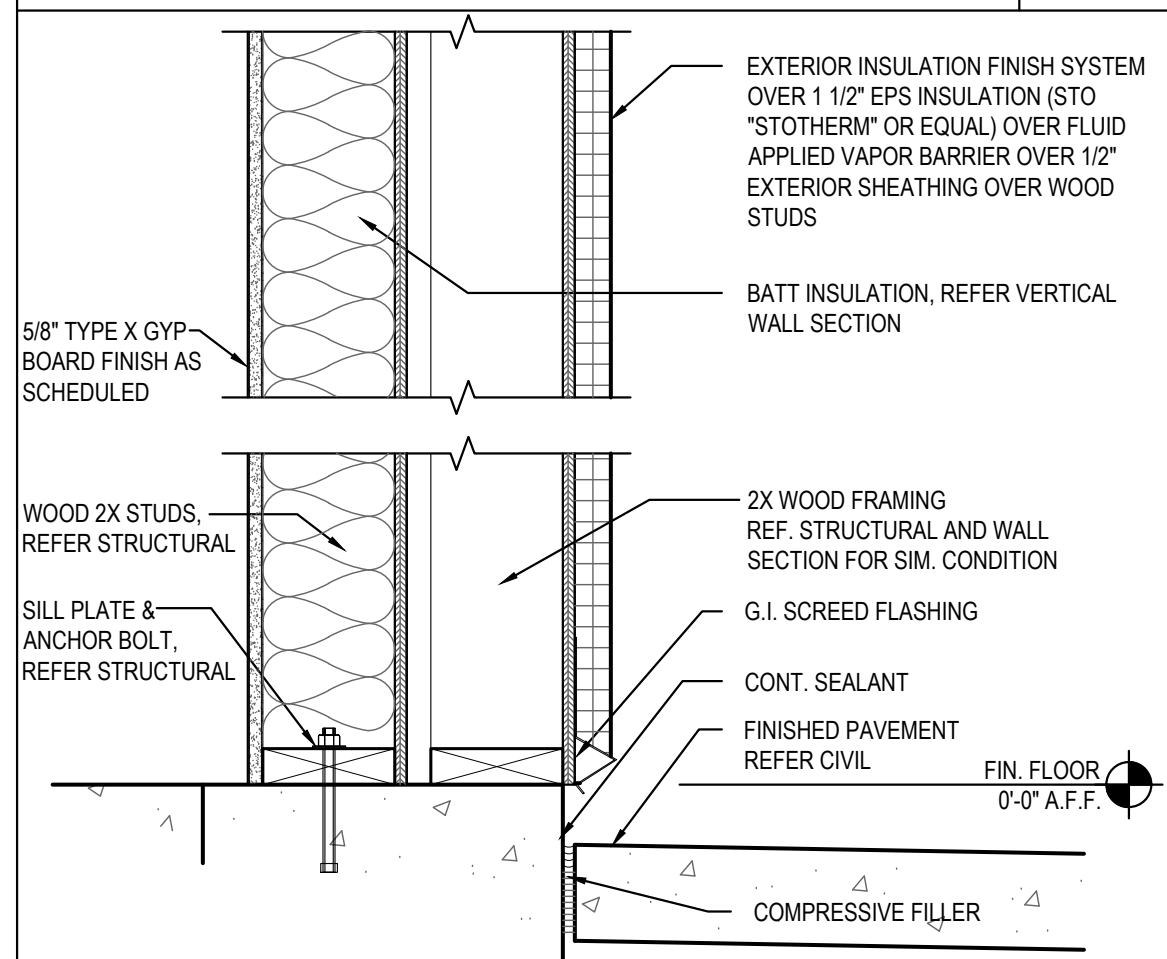
PARAPET DETAIL 05

Scale= 1 1/2" = 1'-0" A-400.2



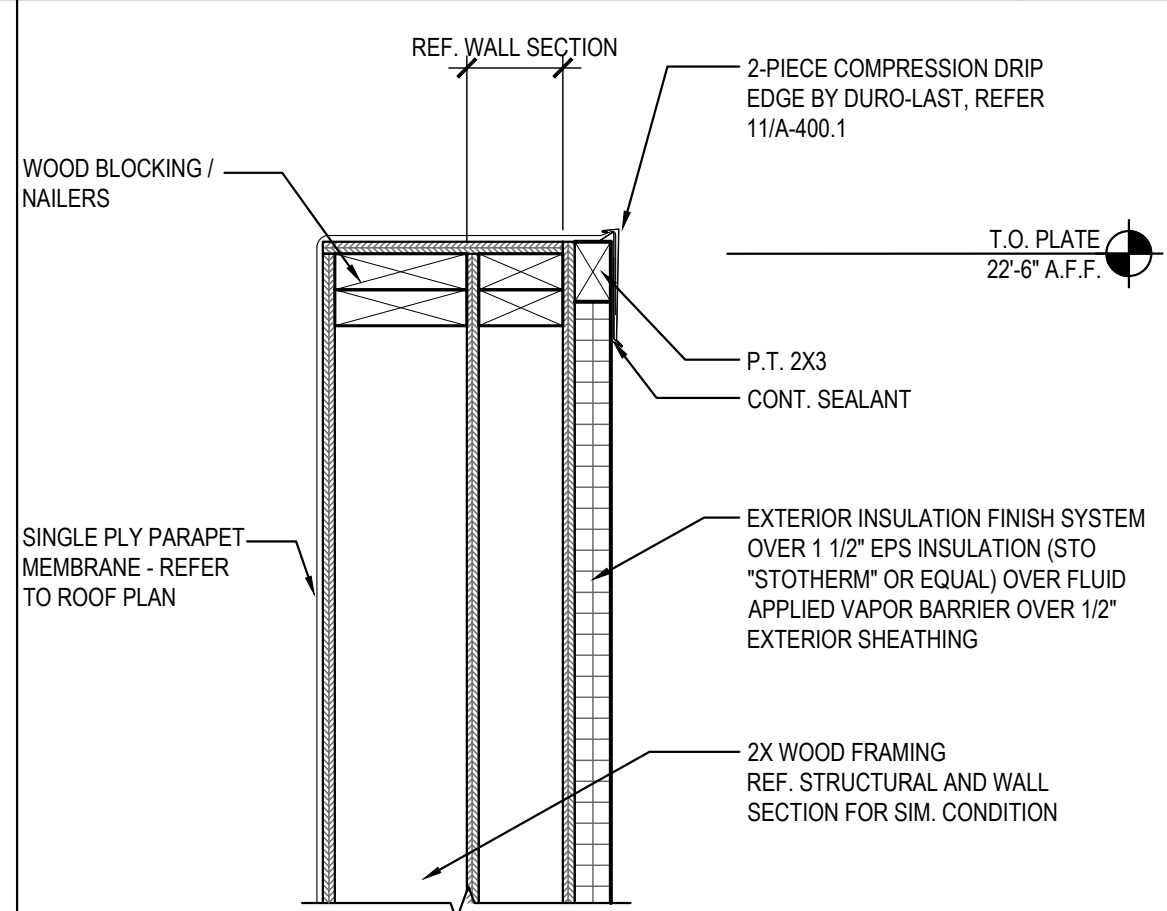
PARAPET DETAIL 04

Scale= 1 1/2" = 1'-0" A-400.2



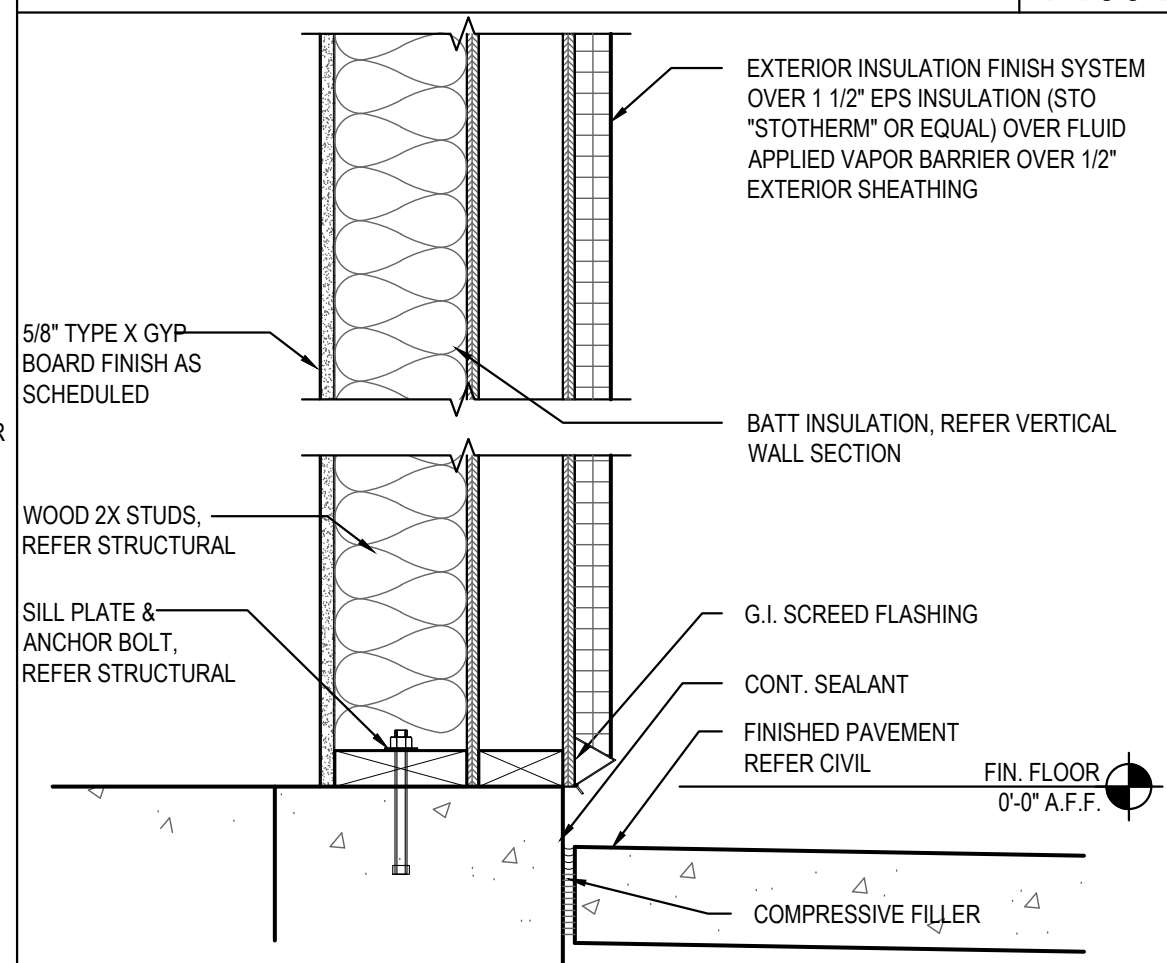
SILL DETAIL 03

Scale= 1 1/2" = 1'-0" A-400.2



PARAPET DETAIL 02

Scale= 1 1/2" = 1'-0" A-400.2



SILL DETAIL 01

Scale= 1 1/2" = 1'-0" A-400.2



PANDA EXPRESS, INC.
1683 Walnut Grove Ave.
Rosemead, California
91770
Telephone: 626.799.9898
Facsimile: 626.372.8288

All ideas, designs, arrangement and plans indicated or represented by this drawing are the property of Panda Express Inc. and were created for use on this specific project. None of these ideas, designs, arrangements or plans may be used by or disclosed to any person, firm, or corporation without the written permission of Panda Express Inc.

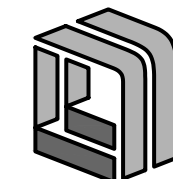
REVISIONS:

ISSUE DATE:

04/27/21 WALMART REVIEW
05/05/21 ISSUE FOR PERMIT

DRAWN BY: BL

PANDA PROJECT #: S8-22-D8044
PANDA STORE #: D8044
ARCH PROJECT #: Q511070001



15450 S OUTER FORTY DRIVE, SUITE 300
CHESTERFIELD, MO 63017
636-898-8100

PANDA EXPRESS

TRUE WARM & WELCOME
N STATE ROAD 9
GREENFIELD, IN 46140

A-400.2

ARCHITECTURAL
DETAILS

TRUE WARM & WELCOME 2300 R5