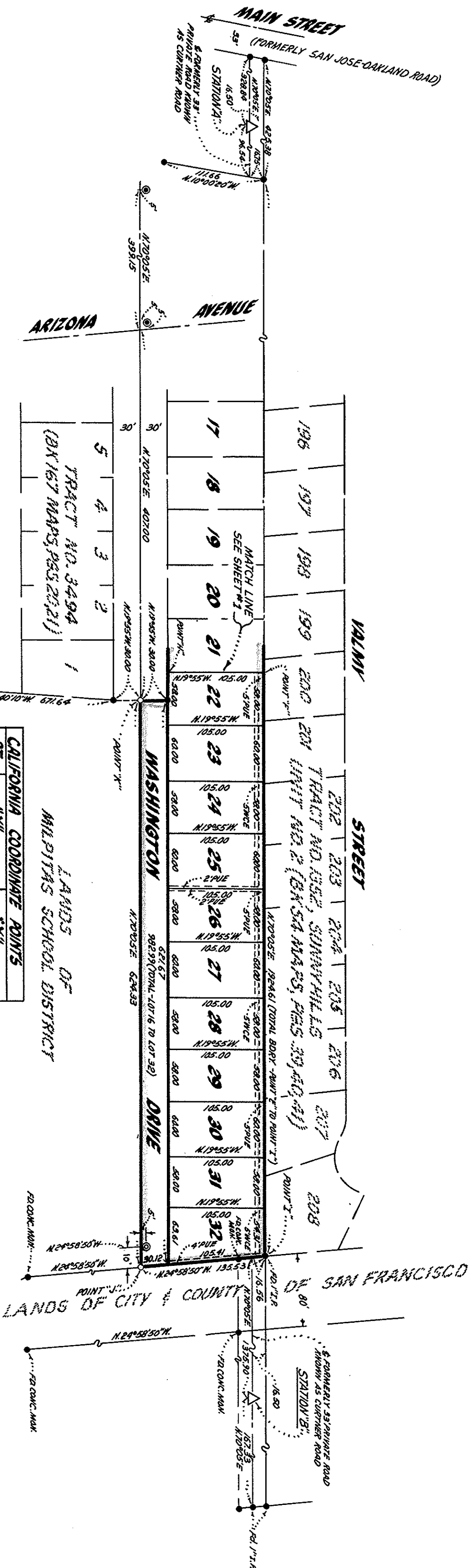


ANALYSIS OF BEARINGS & NOTES

The bearing N. 70°05'E, along the northerly line of Washington Drive as shown on Tract No. 3494, filed for record in Bk. 167 of Maps of Reyes 20142, Santa Clara County Records, was taken as the basis of bearings shown hereon.

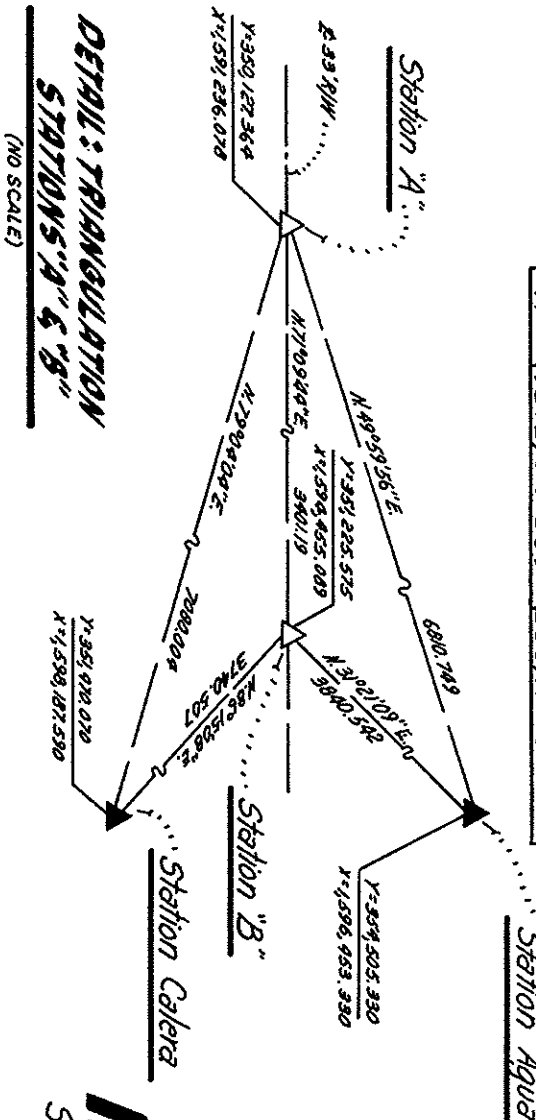
The co-ordinates shown hereon are based on the California Coordinate System, Zone 3.
The blue border indicates the boundary of land subdivided by this map. The area within said boundary consists of 5.028 Acres.
All distances and dimensions are given in feet and decimals thereof.



LEGEND

- Indicates 3/4" iron pipe found unless noted otherwise.
- Indicates 3/4" iron pipe set.
- ⊙ Indicates City Standard monument found.
- ⊙ Indicates City Standard monument set.
- WCE = Wire Clearance Easement
- PUE = Public Utility Easement

NOTE: Multiply ground level distances by 0.9999394 to obtain grid distances. Reverse bearings shown clockwise 170°44' to obtain co-ordinate bearings.



TRACT NO. 3911

Consisting of Two Sheets
Being a portion of the Rancho Agua Caliente, and lying within the City of

MILPITAS, CALIFORNIA

Scale: 1"=100'

MacKay & Sonps

CIVIL ENGINEERS
1130 KNEELYN AVENUE
SUNNYVALE, CALIFORNIA 94089
SHEET 2 OF 2 SHEETS