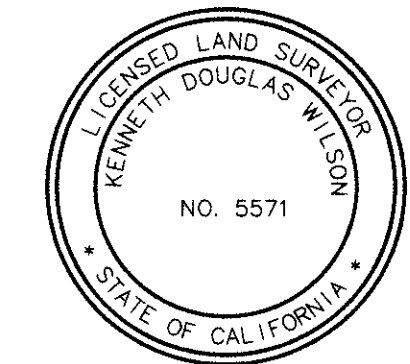
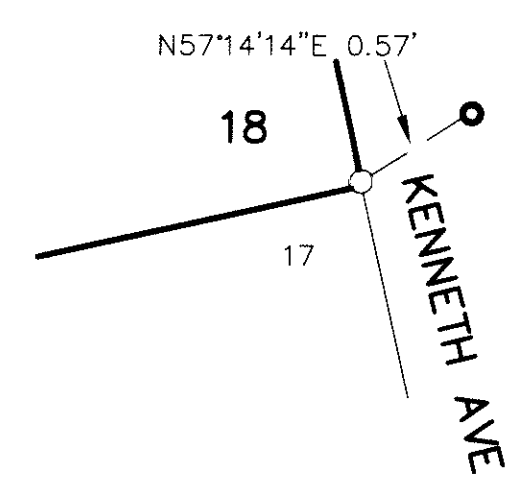


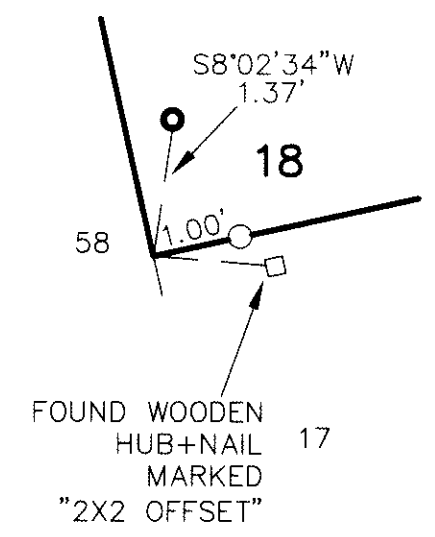
**BASIS OF BEARINGS**  
FOR THIS SURVEY IS SOUTH 12°30'00\"/>

**REASONS FOR MANDATORY FILING ARE PER**  
PROFESSIONAL LAND SURVEYORS ACT  
SECTION 8762 (B)(1).

**DETAIL "A"**  
NOT TO SCALE



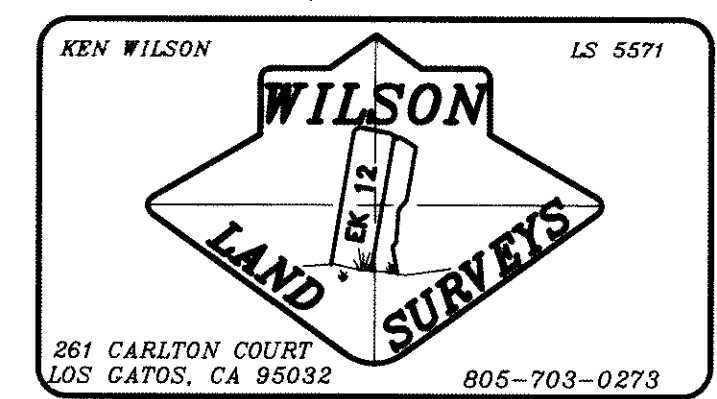
**DETAIL "B"**  
NOT TO SCALE



**LEGEND**

- FOUND AS NOTED
- FOUND 1" IRON PIPE LS 9013; NO RECORD, NOT ACCEPTED
- SET 5/8" REBAR WITH PLASTIC CAP LS 5571
- R-1 30 M 13
- R-2 152 M 8
- R-3 503 M 4
- CF CALCULATED FROM
- ( ) RECORD INFORMATION
- RAD RADIAL BEARING

Email: [kenw@wilsonlandsurveys.com](mailto:kenw@wilsonlandsurveys.com)  
[www.wilsonlandsurveys.com](http://www.wilsonlandsurveys.com)



**SURVEYOR'S STATEMENT**

THIS MAP CORRECTLY REPRESENTS A SURVEY MADE BY ME OR UNDER MY DIRECTION IN CONFORMANCE WITH THE REQUIREMENTS OF THE PROFESSIONAL LAND SURVEYORS ACT AT THE REQUEST OF VICTORIA FISHER IN SEPTEMBER 2016.

*Kenneth D. Wilson* 5-13-17  
KENNETH D. WILSON LS 5571

**COUNTY SURVEYOR'S STATEMENT**

THIS MAP HAS BEEN EXAMINED IN ACCORDANCE WITH SECTION 8766 OF THE PROFESSIONAL LAND SURVEYORS ACT. THIS MAP IS CORRECT AS SHOWN ON THE DATE OF 10-07-2017 AT THE REQUEST OF KENNETH D. WILSON.  
WILLIAM F. SLEPNIUKOFF, COUNTY SURVEYOR  
PLS NO. 5701

BY: AUGUST HANKS, DEPUTY COUNTY SURVEYOR  
PLS NO. 9274

**RECORDER'S STATEMENT**

FILED THIS 13<sup>th</sup> DAY OF June 20 17 AT 10:07 A.M. IN BOOK 904 OF MAPS AT PAGE 39,  
AT THE REQUEST OF KENNETH D. WILSON.  
FILE NO. 23672363 FEE \$8.00

COUNTY RECORDER REGINA ALCOMENDRAS

BY: DEPUTY VANESSA ORTIZ

**RECORD OF SURVEY**

AS REQUESTED BY:  
**VICTORIA FISHER**

LEGAL DESCRIPTION: LOT 18 30 "M" 13, CITY OF CAMPBELL, COUNTY OF SANTA CLARA, STATE OF CALIFORNIA.

APN: 404-26-012  
DATE: SEPTEMBER 2016  
FILENAME: G-049 FISHER RECORD OF SURVEY

DRAWN BY:	SCALE:	PROJECT:	JOB NUMBER:	SHEET:
KTW	1"=30'	G-049	G-049	1 OF 1

COUNTY GRID NO.: 113-31-59

23672363

BK 904

Pg 39

39