

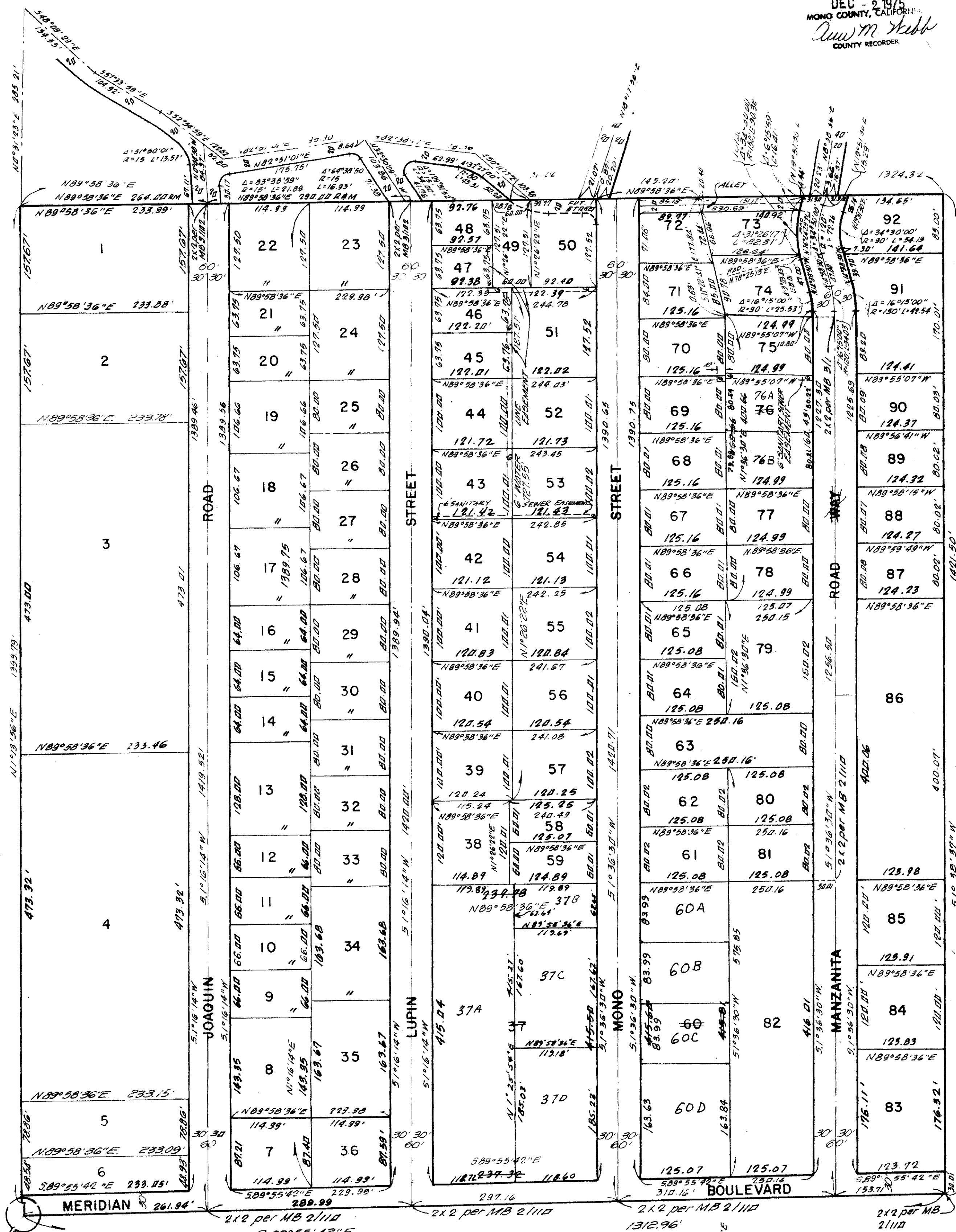
VOLUME 1 page 11  
(See Assessment List - Vol. 1, pg. 3)

SCALE: 1" = 100'

SHEET 2 OF 2 SHEETS

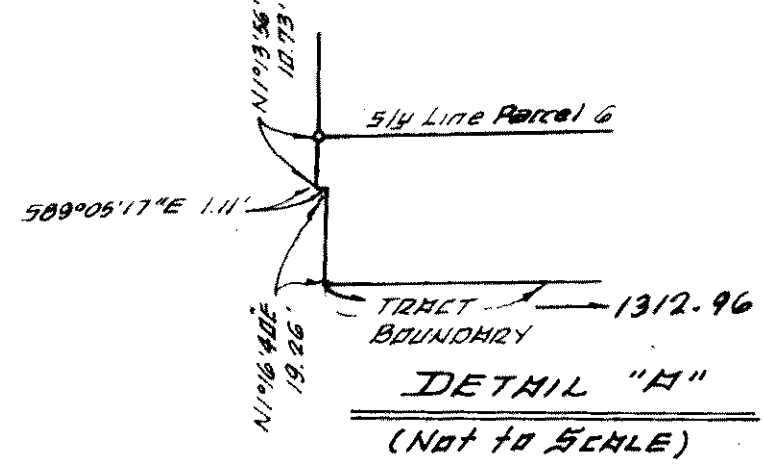
ASSESSMENT DIAGRAM, SIERRA VALLEY TRACT NO. 2  
MAMMOTH LAKES, COUNTY OF MONO, CALIFORNIA.

FILED AT REQUEST OF  
Mono Co. Road Department  
AT 30 MIN. PAST 10:00 AM, Assessment  
OFFICIAL RECORDS - Maps - Vol. 1, pg. 3  
DEC - 2 1975  
MONO COUNTY, CALIFORNIA  
Curt M. Webb  
COUNTY RECORDER



SEE DETAIL HEREIN

Original Parcel No.	New Parcel Nos.	AMENDMENT Date	Approved
60	60A, 60B, 60C, 60D	6/18/71	Richard L. Paul, R.R.
37	37A, 37B, 37C, 37D	11/19/71	Richard L. Paul, R.R.
76	76A, 76B	12/21/75	Richard L. Paul, R.R.



MANZANITA WAY CHANGED TO MANZANITA ROAD (B.S. MINUTE ORDER 2-19-74)