



PANDA EXPRESS, INC.
1683 Walnut Grove Ave.
Rosemead, California
91770
Telephone: 626.799.9898
Facsimile: 626.372.8288

All ideas, designs, arrangement and plans indicated or represented by this drawing are the property of Panda Express Inc. and were created for use on this specific project. None of these ideas, designs, arrangements or plans may be used by or disclosed to any person, firm, or corporation without the written permission of Panda Express Inc.

REVISIONS:

	TWW_2300-2020_R4

ISSUE DATE:

1st	BUILDING PERMIT SET	04-02-21

DRAWN BY: KB

PANDA PROJECT #: S8-22-D8193

PANDA STORE #: -

ARCH PROJECT #: 20044.021



8813 PENROSE LANE, SUITE 400
LENEXA, KS 66219
ph: 913.649.8181 • fx: 913.649.1275

PANDA EXPRESS

TRUE WARM & WELCOME
1485 MAIN ST.
HAMILTON, OH 45013

E-104

ROOF POWER PLAN

TRUE WARM & WELCOME 2300 R5

- ALL ROOF MOUNTED EQUIPMENT SHALL BE IN NEMA-3R ENCLOSURES.
- ALL CONDUIT RUNS SHOWN ON THE ROOF SHALL BE RUN BELOW IN THE CEILING SPACE WHERE AMBIENT TEMPERATURE WILL BE BELOW 30° C. FINAL CONNECTIONS TO THE ROOF EQUIPMENT IS LIMITED TO 5'-0" OF DIRECT SOLAR EXPOSURE.
- VERIFY ALL FUSE SIZES AND TYPES WITH THE MECHANICAL EQUIPMENT MANUFACTURER PRIOR TO INSTALLATION.
- REVIEW THE MECHANICAL PLANS FOR HVAC CONTROL REQUIREMENTS AND SCOPE OF WORK PRIOR TO BIDDING AND INCLUDE ALL COSTS IN BID.
- VERIFY CONNECTION POINTS OF ALL HVAC EQUIPMENT PRIOR TO INSTALLATION. PROVIDE CONTROL VOLTAGE CONNECTION TO DUCT MTD. SMOKE DETECTOR AS REQUIRED BY MECHANICAL DRAWING M-100 AND INTERLOCK WITH FIREALARM.
- SEE MECHANICAL DRAWINGS FOR EXACT LOCATIONS OF MECHANICAL EQUIPMENT AND THERMOSTATS. PROVIDE RACEWAY SYSTEM FOR ALL CONTROL WIRING AS REQUIRED BY MECHANICAL DRAWING M-100.
- E.C. COORDINATE ELECTRICAL, MECHANICAL, FIRE ALARM (IF REQUIRED) FOR INTERLOCK SEQUENCE FOR FIRE SUPPRESSION.
- RESTROOM EXHAUST FAN TO BE POWERED FROM BACK OF HOUSE LIGHTING CIRCUIT. SEE DETAIL 5/E400 FOR ADDITIONAL INFORMATION.

ROOF PLAN GENERAL NOTES 2
NOT TO SCALE E-104

- ROUTE HOMERUN THROUGH BACK OF HOUSE LIGHTING CIRCUIT. REFER TO LIGHTING CONTACTOR SCHEDULE. 4/E-101. FAN TO BE CONTROLLED BY SWITCH FOR BACK OF HOUSE LIGHTING.
- DUCT SMOKE DETECTOR. FURNISHED BY MECHANICAL/FACTORY. WIRED BY ELECTRICAL / FIRE ALARM CONTRACTOR. FURNISH AND INSTALL ALL RACEWAY, WIRING, AND ADDITIONAL ACCESSORIES REQUIRED FOR CODE COMPLIANCE AND UNIT SHUTDOWN.
- CIRCUIT FEEDS FROM PANELBOARD - THROUGH HOOD CONTROL PANEL - UP TO ROOF. REFER TO DETAIL, SHEET 3/E-401 & KITCHEN HOOD SUBMITTAL DATA.
- REFER TO CONDENSING UNIT WIRING DIAGRAM, 7/E-400.
- STRUT RACK SUPPORT FOR EQUIPMENT DISCONNECT SWITCHES. REFER TO DETAIL, SHEET 2/E-401.
- PROVIDE AND INSTALL 2-1/2" DIA GALVANIZED RIGID METAL CONDUIT AND WEATHERHEAD +24" A.F.G. CONDUIT TO BE STRAPPED TO CLOSEST JOIST TO THE MANAGER'S STATION (FULL DEPTH).
- DO NOT INSTALL UNTIL BACK DRAFT DAMPER INSTALLATION IS COMPLETE. UTILIZE FACTORY KNOCKOUTS FOR ELECTRICAL RUN FOR THIS FAN. REFER TO SHEET M-402.
- MOUNT PHOTOCELL AS DETAILED ON EQUIPMENT DISCONNECT SWITCH SUPPORT DETAIL 2/E401 ON CONDENSER RACK.
- STUB ELECTRICAL FEED FOR EF-1 & EF-2, THROUGH ROOF ON HINGE SIDE OF EXHAUST FANS. IN LOCATION AS SHOWN ON POWER ROOF PLAN. REFER TO DETAIL 3/M-501 FOR ADDITIONAL DETAILS.
- ROUTE POWER FEEDS VIA FACTORY PROVIDED THRU-BASE CONNECTION AREA. COORDINATE WITH MECHANICAL.
- UNIT INCLUDES FACTORY MOLDED CASE DISCONNECT SWITCH (NO OCP). VERIFY WITH MECHANICAL SUBMITTAL DATA. PROVIDE DISCONNECT IF / AS REQUIRED.

ROOF PLAN KEYED NOTES 3
NOT TO SCALE E-104

ROOFTOP EQUIPMENT SCHEDULE

TAG	DESCRIPTION	kW	H.P.	FLA	VOLT/Ø	WIRE, CONDUIT	CONN.	MOUNT HEIGHT	DISC. SW. WITH RK1 FUSES PER MFR'S REQ'S. AND/OR REMARKS
RTU1	A/C UNIT			33.0	208V.3Ø	3 #8, #10 GND., 1" C.	<input type="checkbox"/>	AT UNIT	60A. 3P. 3F. WP (1)(4)
RTU2	A/C UNIT			46.0	208V.3Ø	3 #6, #10 GND., 1" C.	<input type="checkbox"/>	AT UNIT	60A. 3P. 3F. WP (1)(4)
RTU3	A/C UNIT			46.0	208V.3Ø	3 #6, #10 GND., 1" C.	<input type="checkbox"/>	AT UNIT	60A. 3P. 3F. WP (1)(4)
MA-1	MAKE-UP AIR UNIT	5.0	15.0	208V.3Ø	3 #12, #12 GND., 3/4" C.		<input type="checkbox"/>	AT UNIT	(1)(4)
EF-1	EXHAUST FAN	2.0	5.9	208V.3Ø	3 #12, #12 GND., 3/4" C.		<input type="checkbox"/>	AT UNIT	(1)
EF-2	EXHAUST FAN	2.0	5.9	208V.3Ø	3 #12, #12 GND., 3/4" C.		<input type="checkbox"/>	AT UNIT	(1)
EF-3	EXHAUST FAN	1/4	4.8	120V.1Ø	2 #12, #12 GND., 3/4" C.		<input type="checkbox"/>	AT UNIT	30A. 2P. 1F. WP (1)(4)
31-S	W/ COOLER COND.			27.0	208V.1Ø	2 #10, #10 GND., 3/4" C.	<input checked="" type="checkbox"/>	AT UNIT	(2)(3)
32-S1	W/ FREEZER COND.			32.0	208V.1Ø	2 #8, #8 GND., 3/4" C.	<input checked="" type="checkbox"/>	AT UNIT	30A. 2P. 2F. WP (3)
10J-S1	ICE MACHINE COND.			11.7	208V.1Ø	2 #12, #12 GND., 3/4" C.	<input checked="" type="checkbox"/>	AT UNIT	(2)(3)

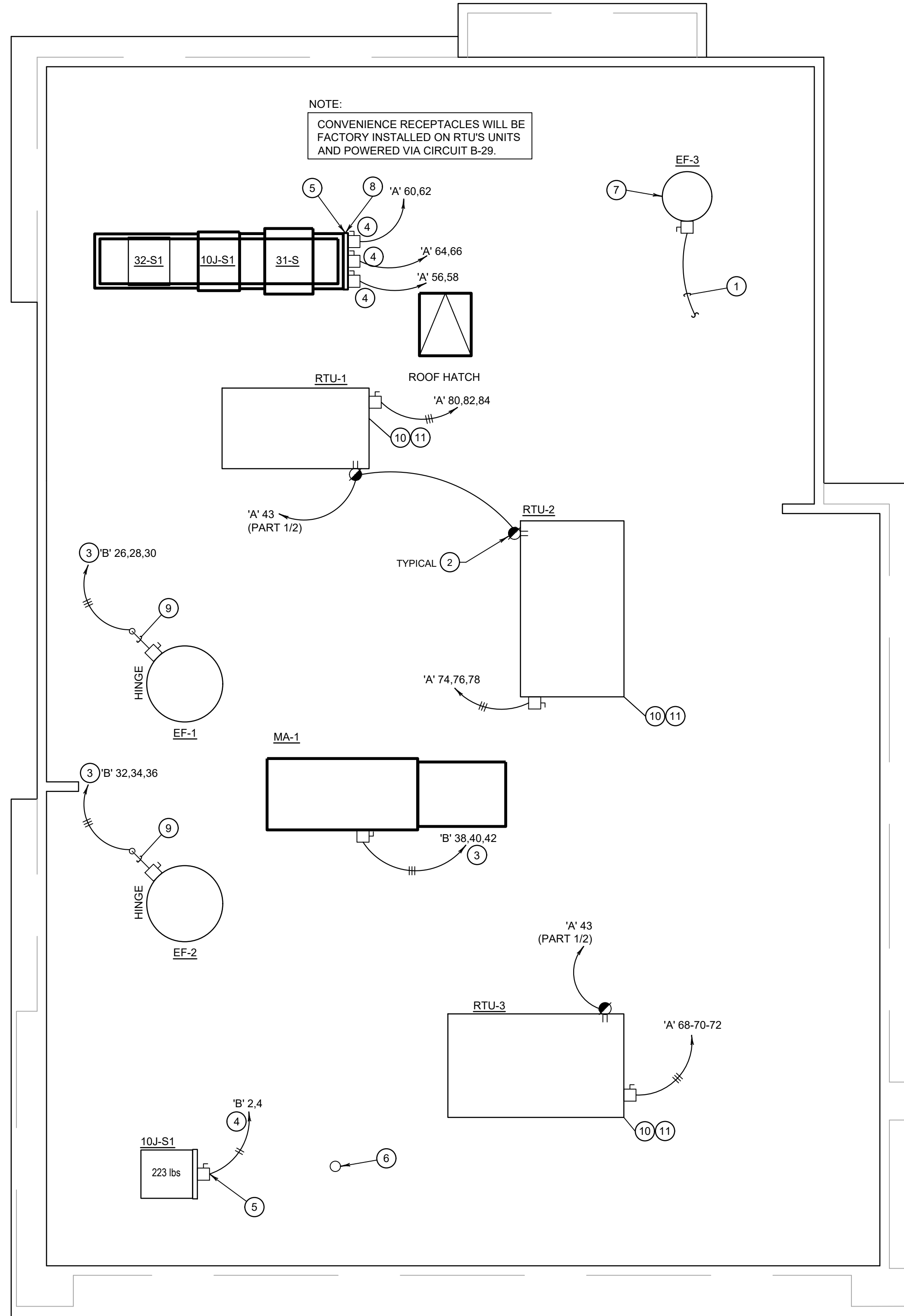
(1) DISCONNECT SWITCH PROVIDED WITH UNIT.

(2) COMBINATION 30A. 2P. 2F. WP DISCONNECT SWITCH WITH RK5 FUSES PER MANUFACTURER RECOMMENDATION.

(3) COMBINE CIRCUITRY IN 1" CONDUIT FROM J-BOX ON EQUIPMENT DISCONNECT SWITCH SUPPORT. REFER TO DETAIL THIS SHEET, 1 / E-104.

(4) ELECTRICAL FEEDS ARE TO BE ROUTED FROM PLENUM SPACE, UP THROUGH EQUIPMENT CURB, INTO BOTTOM OF EQUIPMENT, THROUGH FACTORY INSTALLED WATER TIGHT CONNECTIONS.

HVAC EQUIPMENT SCHEDULE 4
NOT TO SCALE E-104



ROOF POWER PLAN 1
1/4" = 1'-0" E-104