

FINAL MAP
TRACT NO. 36-91

SHEET 2 OF 2

SUNFLOWER CONDOMINIUM

SITUATED IN THE SW 1/4, SEC. 35, T.3S., R. 27E., M.D.M.
IN THE UNINCORPORATED TERRITORY OF THE
COUNTY OF MONO, STATE OF CALIFORNIA.

BEING A SUBDIVISION OF LOT 10 AND LOT 11 OF
SHERWIN VIEW PARK SUBDIVISION RECORDED IN
MAP BOOK 5 AT PAGE 126 OF THE OFFICIAL
RECORDS.

MONUMENTATION:

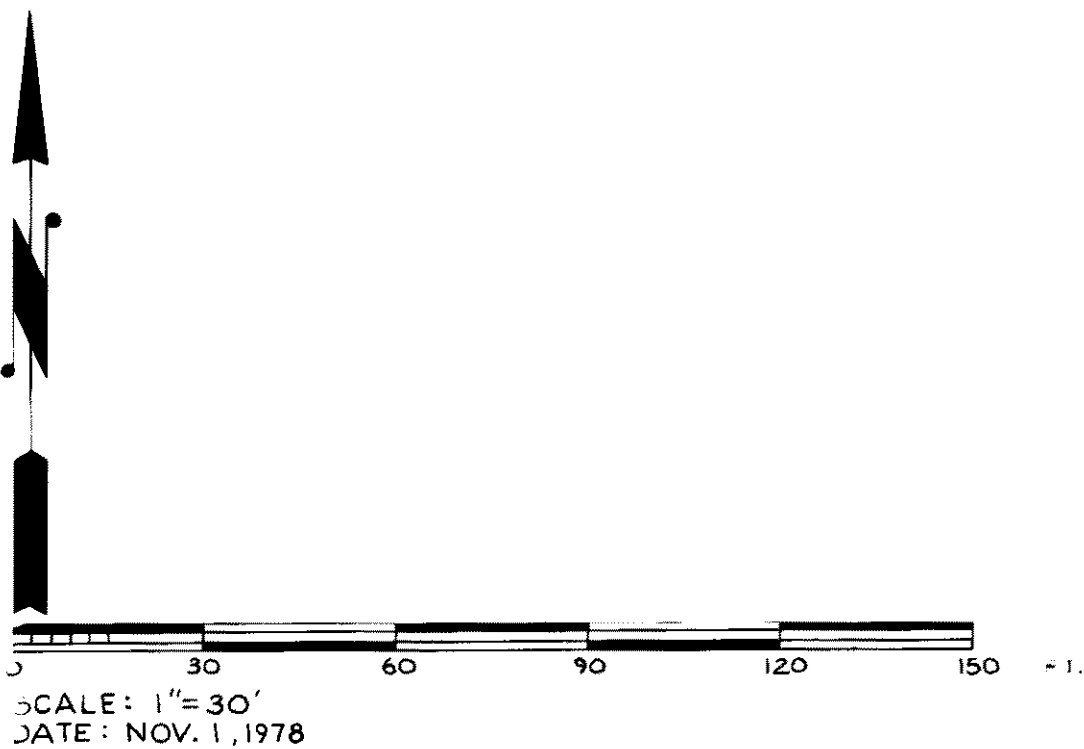
- INDICATES FOUND 1" IRON PIPE WITH TAG
L.S. 3246 PER M.B. 5, PG. 126 (UNLESS OTHERWISE NOTED.)
- INDICATES FOUND MONUMENT AS SHOWN AND NOTED.

NOTE:

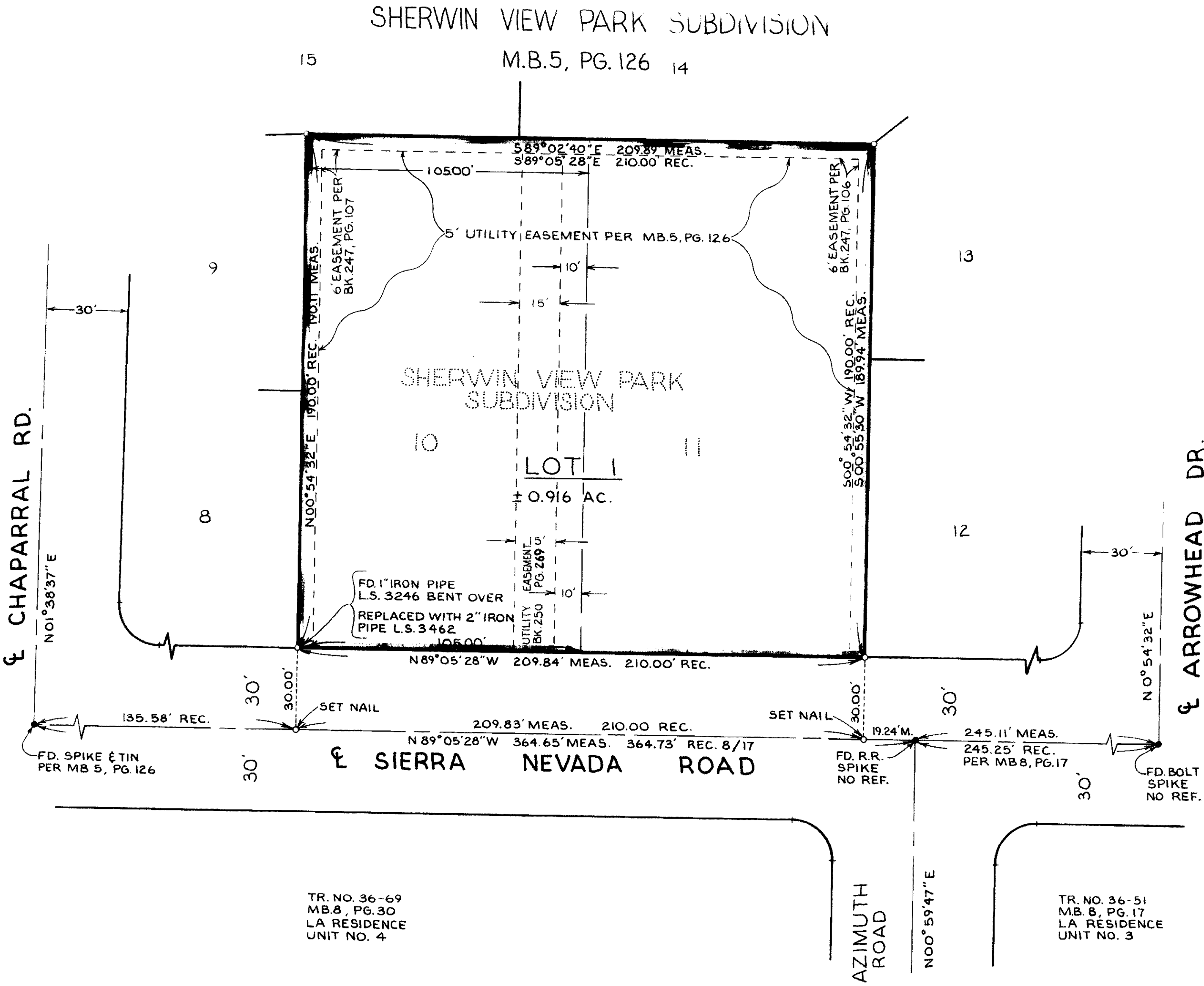
- 1. RECORD DATA (UNLESS OTHERWISE NOTED), IS PER
M.B. 5, PG. 126 O.R.

EASEMENTS:

EASEMENTS FOR UTILITY PURPOSES TO SOUTHERN CALIFORNIA
EDISON COMPANY AND CONTINENTAL TELEPHONE COMPANY AS
PER DEEDS RECORDED IN BOOK 247, PAGE 106; BOOK 247 PAGE 107
AND BOOK 250, PAGE 269 OF THE OFFICIAL RECORDS, AND AS
AMENDED BY DEEDS RECORDED IN BOOK 254, PAGES 473
AND 474; BOOK 256, PAGE 496 OF THE OFFICIAL RECORDS.



BASIS OF BEARING:
BEARINGS BASED ON FOUND MONUMENTS ALONG THE CENTER-
LINE OF SIERRA NEVADA ROAD BETWEEN THE INTERSECTIONS OF
CHAPARRAL ROAD AND ARROWHEAD DRIVE, N 89° 05' 28" W
PER SHERWIN VIEW PARK SUBDIVISION, M.B. 5, PG. 126.



Sub Map Lot 4

Page 74