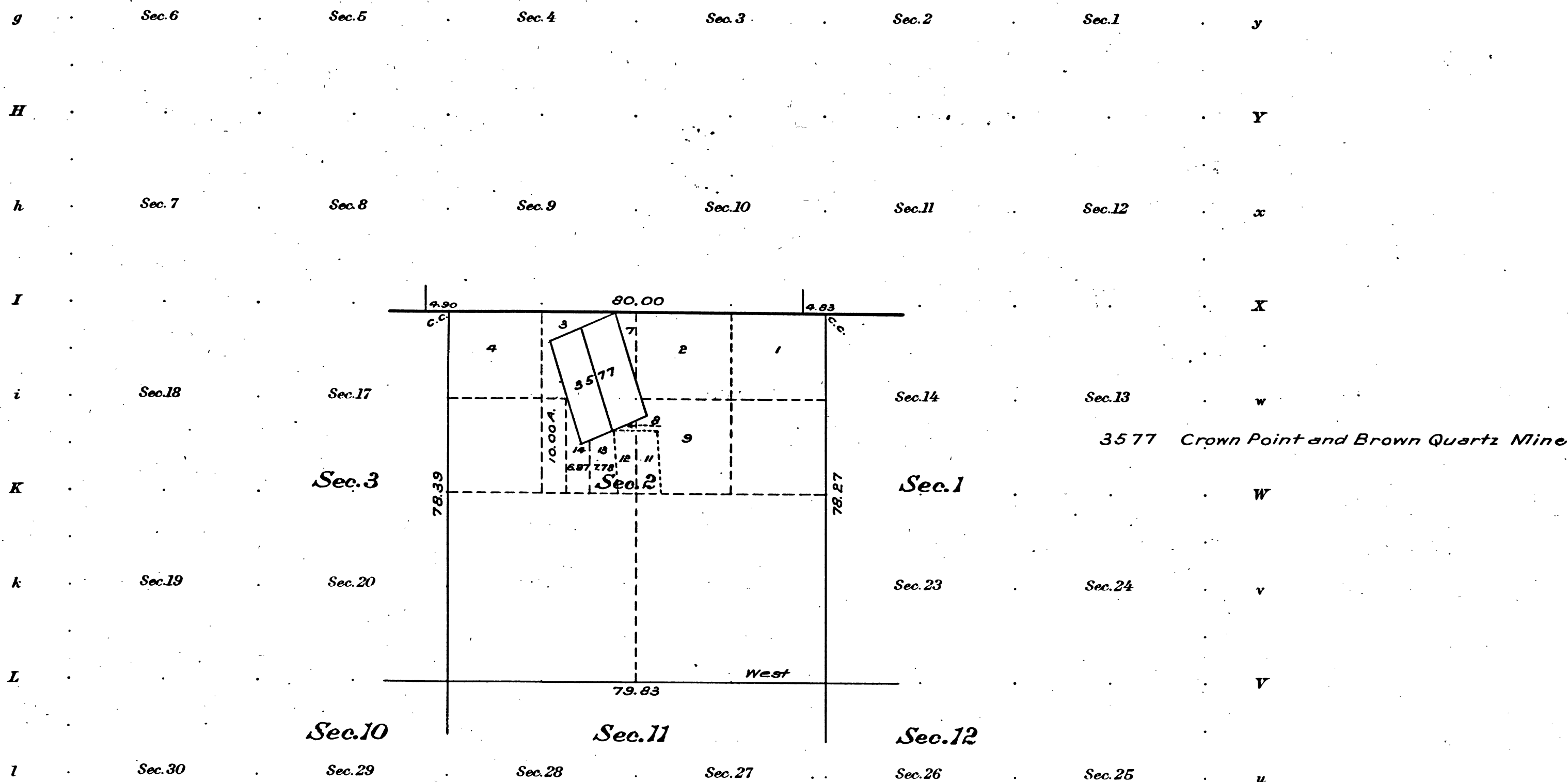


Cr 2

(4-675a)

Supplemental Plat of Section 2,
Township No. 5 North, Range No. 11 East, Mount Diablo Meridian, California.

Scale: 20 chains = 1 inch



Sacramento 07946, "E" J.A.D., November 2, 1915.

This supplemental plat, showing the subdivision of Lot 10, Section 2, T. 5 N., R. 11 E., Mount Diablo Meridian, California, plat approved January 3, 1912, is made for the purpose of obtaining the area and legal designation of the subdivisions thereof, to comply with H.E., Sacramento 07946, of John Rogers, embracing Lot 10 of said section, except 10 acres described as the W $\frac{1}{2}$ W $\frac{1}{2}$ SE $\frac{1}{4}$ NW $\frac{1}{4}$, (patented) and is hereby approved.
U. S. Surveyor-General's Office,
San Francisco, California,
December 1, 1915.

Frank W. Gould
U. S. Surveyor-General
for California.

Areas in Acres	
Public Land	
Indian Reservation	
Indian Allotments	
Mineral Claims	
Water Surface	
Total Area	

Scale 40 Chains to an inch

Mean Magnetic Declination

Surveys Designated	By Whom Surveyed	Contract		Amount of Surveys			When Surveyed	
		No.	Date	Mts.	chs.	lks.	Began	Completed

The above map of Township No. ... Range No. ... of the
Meridian ... is strictly conformable to the field notes of the survey thereof on file
in this office, which have been examined and approved
U. S. Surveyor-General's Office.

Surveyor General.

41 393

Accepted per Letter "E" REGISTER AND RECEIVER RECEIPT
Dated Dec 17 1915 DATED Dec 27 1915

T5N R11E MD

BLM 211