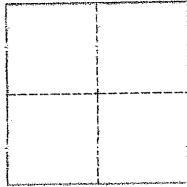


# CORNER RECORD

Agency Index **BK 103 PG 80**  
Document Number **CR 10733**

City of **BERKELEY** County of **ALAMEDA**, California  
Brief Legal Description **LOT 661, BERKELEY VIEW TERRACE 12M 62-64**



## CORNER TYPE

Government Corner ☐ Control ☐  
Meander ☒ Property ☐  
Rancho ☐ Other ☐

Date of Survey **10/27/17**

## COORDINATES (Optional)

N. \_\_\_\_\_ E. \_\_\_\_\_

Elevation \_\_\_\_\_

Units Metric ☐ U.S. Survey Foot ☐

Horizontal Datum \_\_\_\_\_

Zone \_\_\_\_\_ Epoch Date \_\_\_\_\_

Vertical Datum \_\_\_\_\_

☐ Complies with Public Resources Code §§8801-8819

☐ Complies with Public Resources Code §§8890-8902

PLS Act Ref.: ☒ 8765(d) ☐ 8771 ☐ 8773 ☐ Other:  
Corner/Monument: ☐ Left as found ☒ Established ☐ Rebuilt ☐ Pre-Construction  
☐ Found and tagged ☐ Reestablished ☐ Referenced ☐ Post-Construction

Narrative of corner identified and monument as found, set, reset, replaced, or removed:

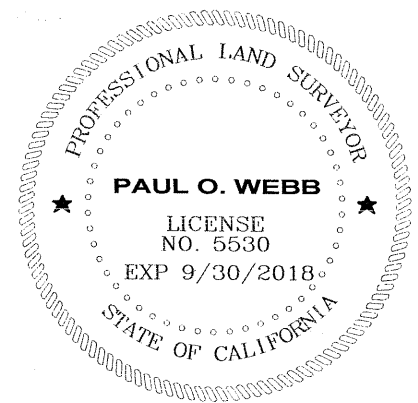
☒ See sheet #2 for description(s):

## SURVEYOR'S STATEMENT

This Corner Record was prepared by me or under my direction in conformance with

the Professional Land Surveyors' Act on **OCTOBER 31, 2017**

Signed **Paul O. Webb** P.L.S. or R.C.E. No. **5530**



## COUNTY SURVEYOR'S STATEMENT

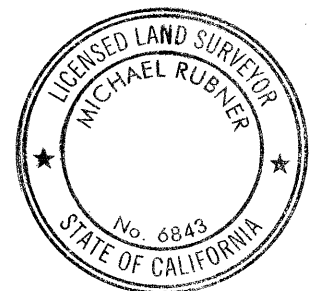
This Corner Record was received **2 NOVEMBER 2017**

and examined and filed **8 DECEMBER 2017**

Signed **Michael Rubner** P.L.S. or R.C.E. No. **6843**

Title **COUNTY SURVEYOR**

County Surveyor's Comment

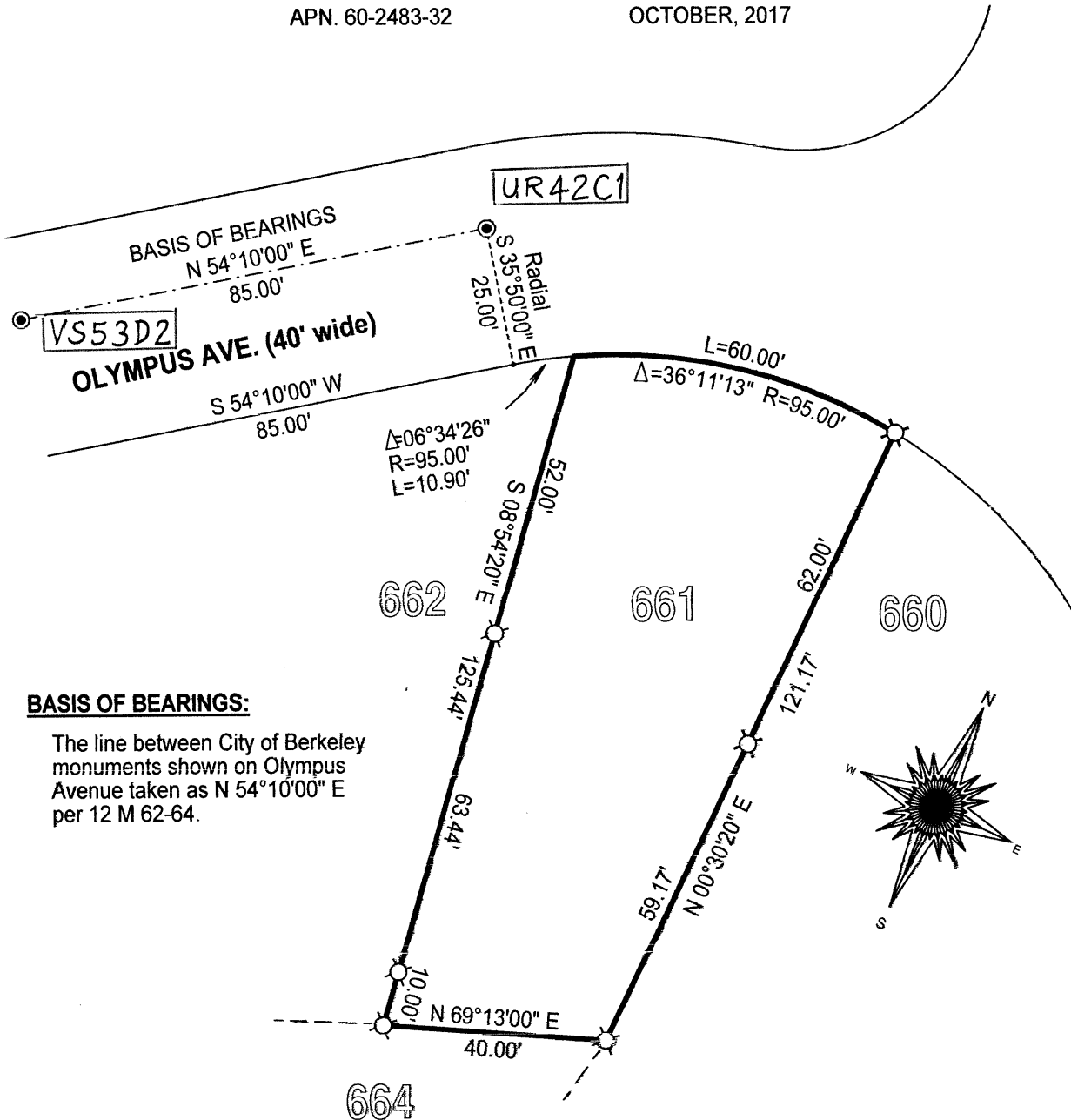


**LOT 661, BERKELEY VIEW TERRACE,  
FILED IN BOOK 12 OF MAPS, PAGES 62-64  
ALAMEDA COUNTY RECORDS**

**CITY OF BERKELEY, COUNTY OF ALAMEDA, STATE OF CALIFORNIA**

APN. 60-2483-32

OCTOBER, 2017



**BASIS OF BEARINGS:**

The line between City of Berkeley monuments shown on Olympus Avenue taken as  $N 54^{\circ}10'00'' E$  per 12 M 62-64.

**LEGEND:**

- found City of Berkeley monument in well
- set 5/8" rebar with cap PLS 5530

SCALE: 1 INCH = 30 FEET

