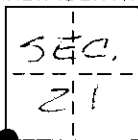


# CORNER RECORD

COUNTY OF ~~INYO~~ MONO T. 9 N R. 23 E M.D.B. & MERIDIAN CALIFORNIA

CORNER TYPE: GOV'T. CORNER ☒ MEANDER ☐ RANCHO ☐ CONTROL ☐ OTHER ☐

CORNER IDENTIFICATION - DATE OF VISIT June 20 1990



520 | 521  
527 | 528  
1941

CORNER - LEFT AS FOUND ☒ FOUND AND TAGGED ☐ REESTABLISHED OBLITERATED CORNER ☐ REBUILT ☐

PHYSICAL DESCRIPTION OF CORNER FOUND: EVIDENCE AND METHOD USED TO IDENTIFY OR REESTABLISH Found USGLO  
brass cap on 1 3/4" O.D.I.P. 1' above ground with 2" O.D.I.P. 1.6' above  
ground and 0.2' south of corner. Corner is located in open field  
215'± south of Topaz Lane, 195'± east of 12' wide dirt road, and  
300'± west of 15'± wide irrigation ditch.

PHYSICAL DESCRIPTION OF MONUMENTS REBUILT OR PERPETUATED

Note: Coordinates are based on CIPS values that have not  
been adjusted to the NGS Network. (Preliminary Adjustment - Tied  
To D.O.T. NGS Stations)

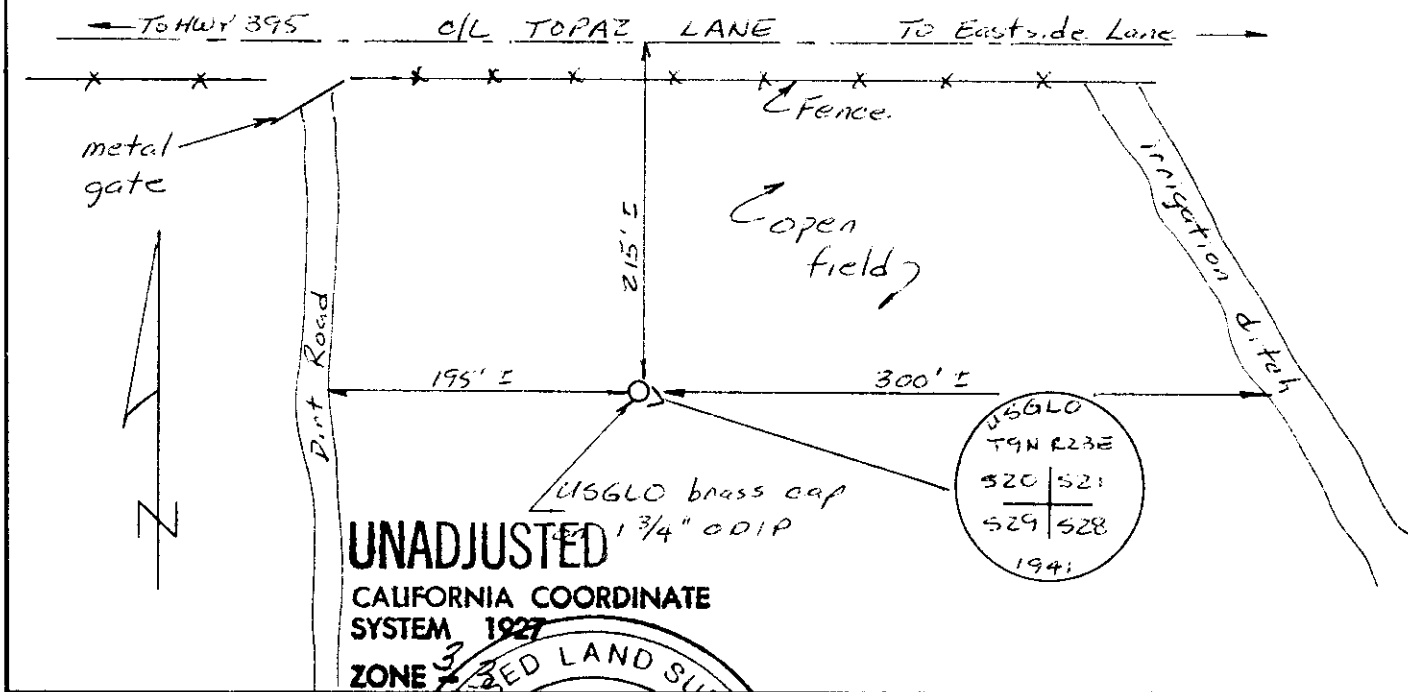
Photos are on file at Caltrans District C9 Office, Survey Dept.,  
500 So. Main St., Bishop, Ca.

CALIFORNIA COORDINATE SYSTEM ORDER: FIRST ☐ SECOND ☐ THIRD ☒

STATIONS USED: NGS (USC & GS) ☐ STATE ☒ COUNTY ☐ OTHER ☐ STATION Round Mtn. STATION

CCS 27 ZONE 3 ELEVATION NORTHINGS (Y) 767,812.0 ± EASTINGS (X) 2,295,613.5 ±

SKETCH: (Include reference tie or witness points, remarks and topo of area)



SURVEYOR'S CERTIFICATE

THIS CORNER RECORD WAS PREPARED BY URS OF WYDERASPE  
DIRECTION IN CONFORMANCE WITH THE LAND SURVEYORS ACT  
ON 6/21/90 1990 NO. 4468

SIGNED: [Signature]

L.S. or R.C.E. No.:

COUNTY SURVEYOR'S CERTIFICATE

THIS CORNER RECORD WAS RECEIVED 3.4 1991  
AND EXAMINED AND FILED 4.28 1991

BY: COUNTY SURVEYOR  
TITLE: Range 23 - 21 - 4

DOCUMENT No. 1941 23-21-4

STATEMENT ON BACK OF SHEET

YES ☐ NO ☒