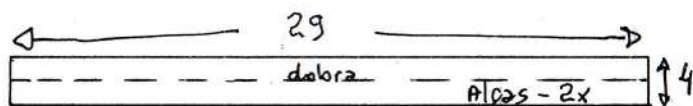


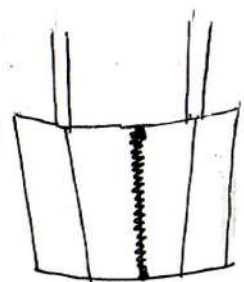
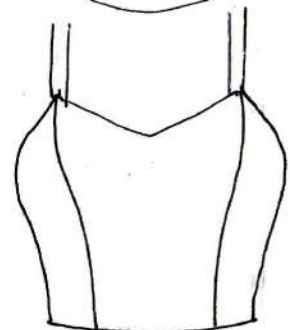
*Maylene Silva*

Molde sem  
margem de  
costura

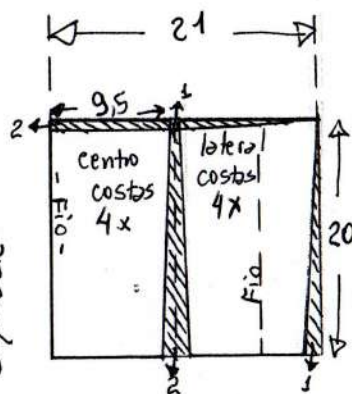
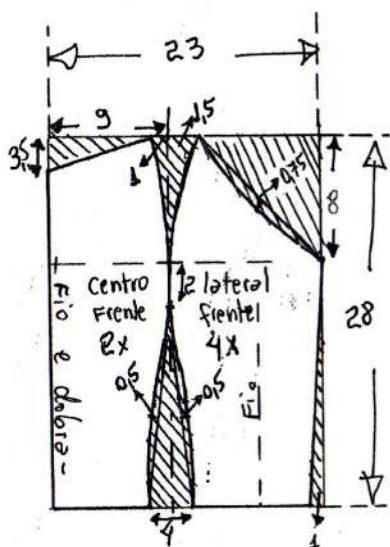


Tecido = 70 cm de tricoline, crepe, lyocel,  
linho, denim, chambrey...

Corpete decote coração  
34

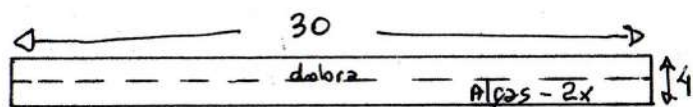


Zíper removível = 18 cm



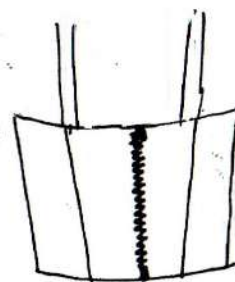
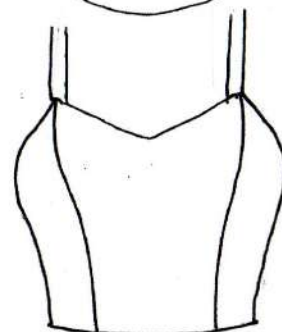
*Marlene Silva*

Molde sem  
= margem de  
costura

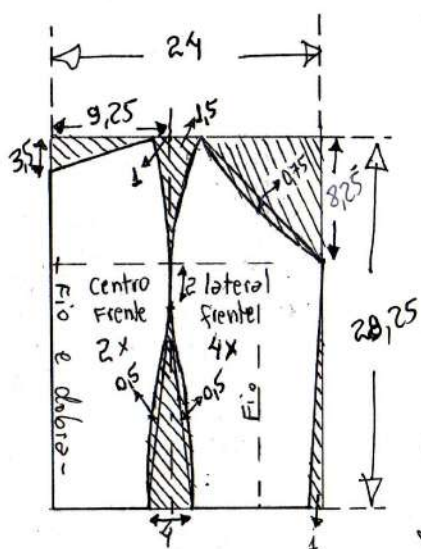


Tecido = 70 cm de tricoline, crepe, lycel,  
linho, denim, chambrey...

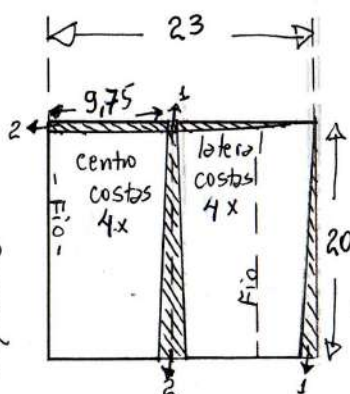
Corpete decote coração  
36



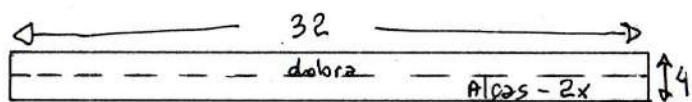
Zíper removível = 18 cm



*Maylene Silva*

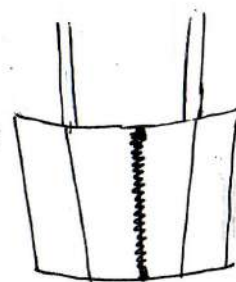
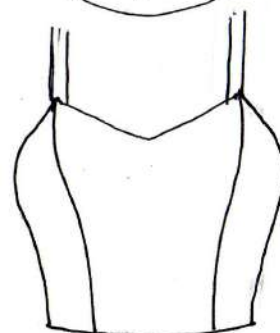


Molde "sem  
margem de  
costura"

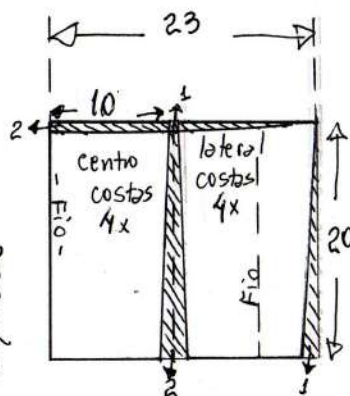
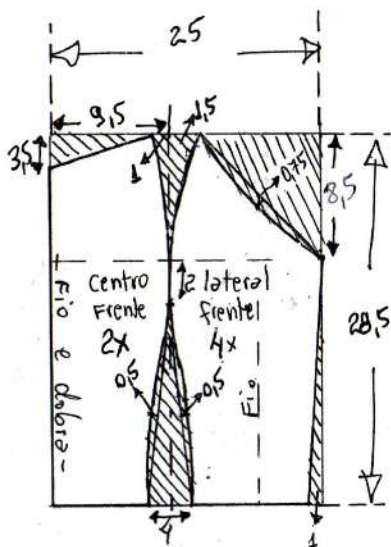


Tecido = 70 cm de tricoline, crepe, lycel, linho, denim, chambray...

Corpete decote coração  
38

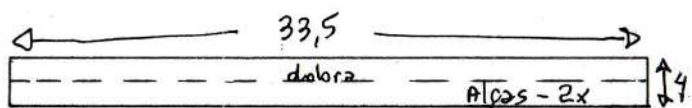


Zíper removível = 18 cm



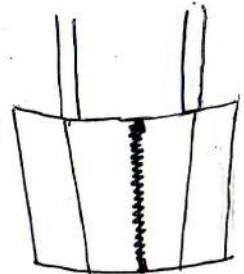
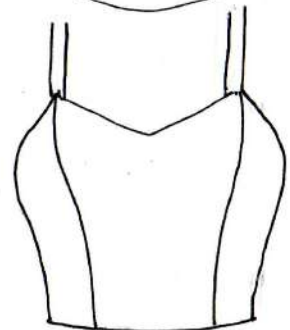
*Mayane Silva*

Molde "sem  
margem de  
costura"

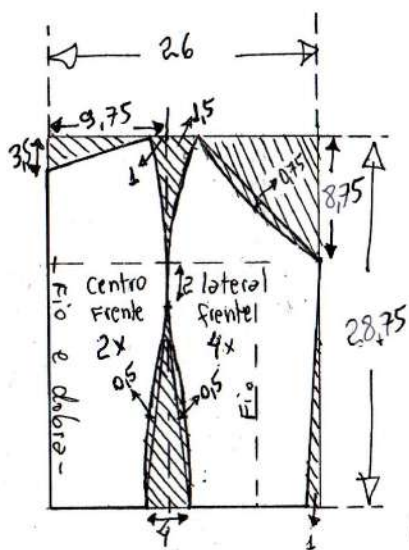


Tecido = 70 cm de tricoline, crepe, lyocel,  
linho, denim, chambrey...

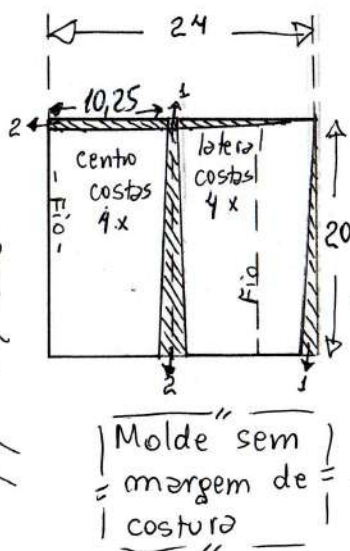
Corpete decote coração  
40



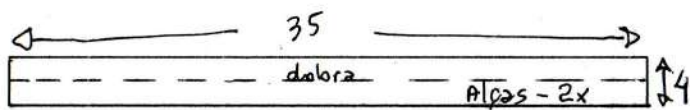
Zíper removível = 18 cm



*Mayane Silva*

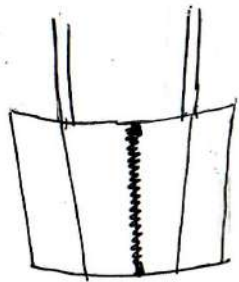
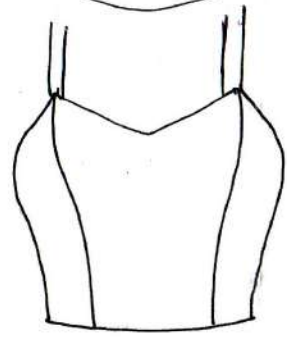


Molde "sem" margem de costura



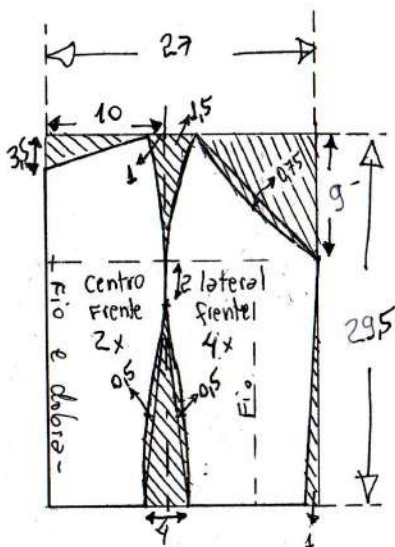
Tecido = 70cm de tricoline, crepe, lyocel, linho, denim, chambrey...

Corpete decote coração 42

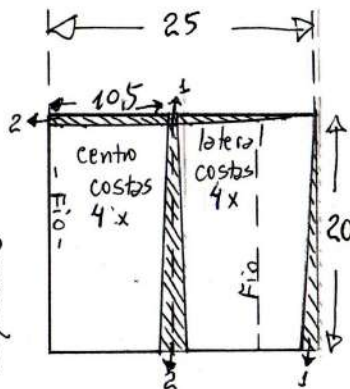


Zipper removível = 18cm

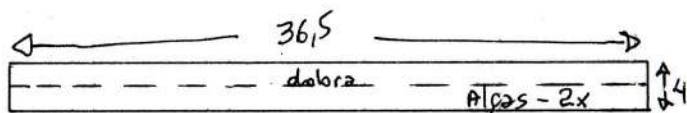




*Maqueline*

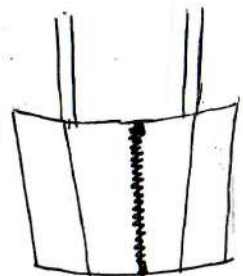
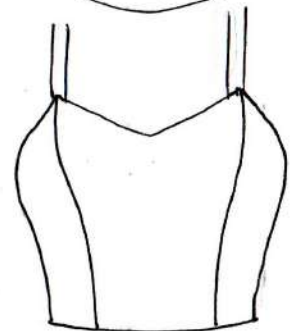


Molde "sem  
margem de  
costura"

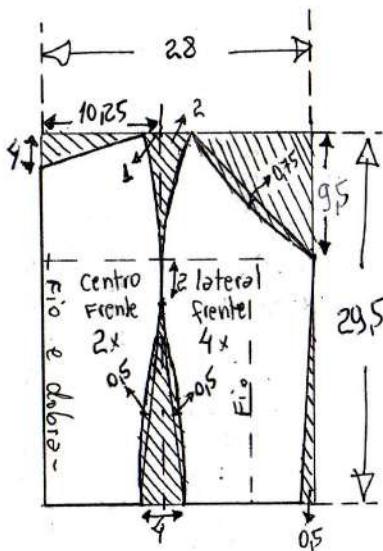


Tecido = 70 cm de tricoline, crepe, lyocel,  
linho, denim, chambrey...

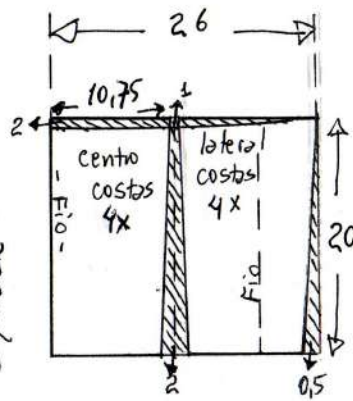
Corpete decote coração  
44



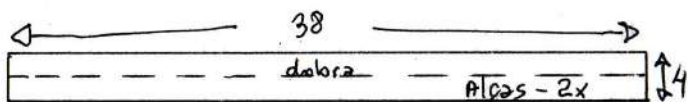
Zíper removível = 18 cm



*Mayara Silva*

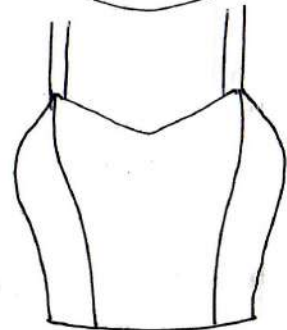


Molde sem  
margem de  
costura



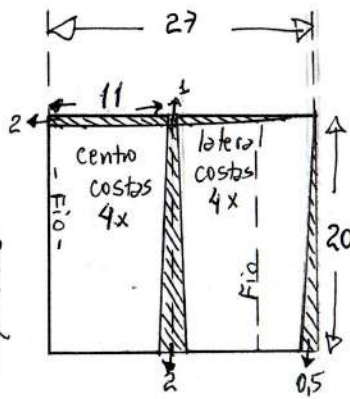
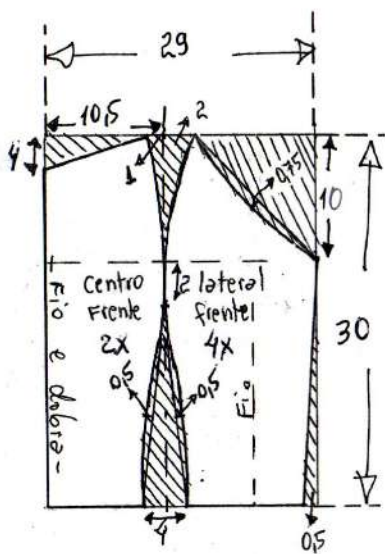
Tecido = 70 cm de tricoline, crepe, lyocel,  
linho, denim, chambray...

Corpete decote coração  
plus size 46



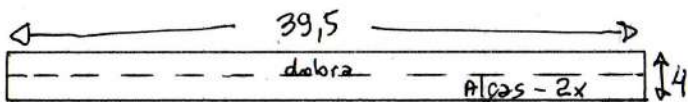
Zipper removível = 18 cm





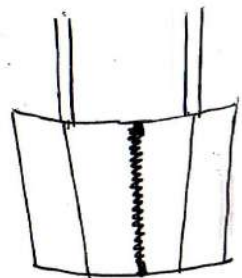
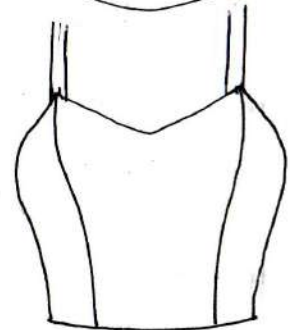
*Maylene Silva*

Molde sem  
margem de  
costura

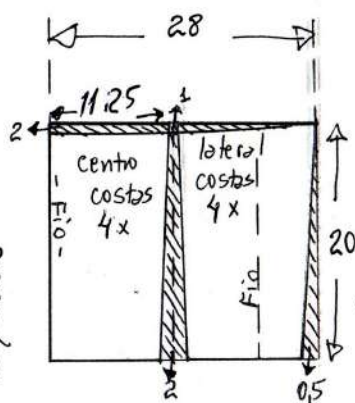
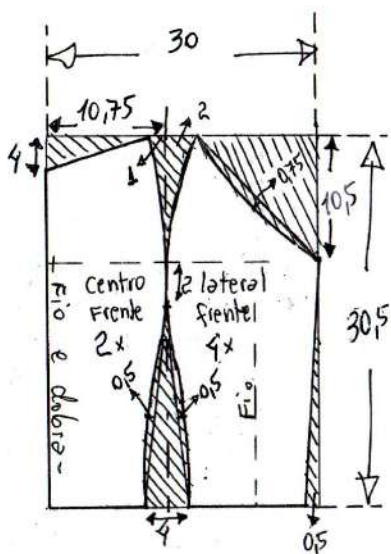


Tecido = 70 cm de tricoline, crepe, lyocel,  
linho, denim, chambrey...

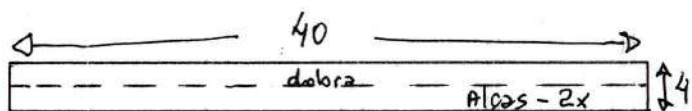
Corpete decote coração  
plus size 48



Zíper removível = 18 cm

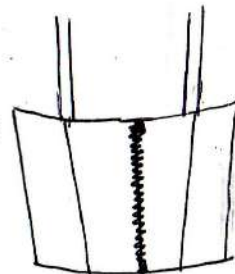
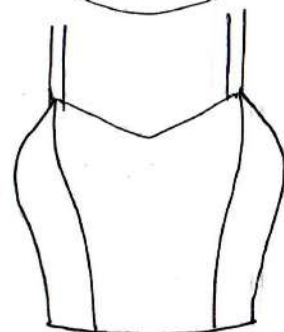


Moldé sem  
margem de  
costura

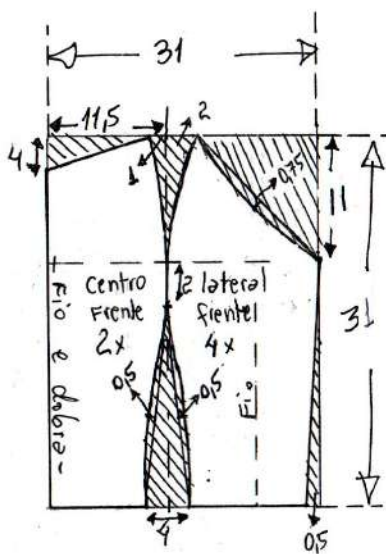


Tecido = 80 cm de tricoline, crepe, lycel,  
linho, denim, chembray...

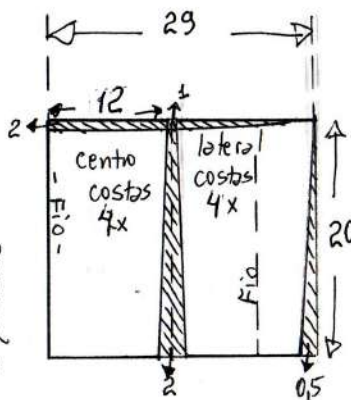
Corpete decote coração  
Plus size 50



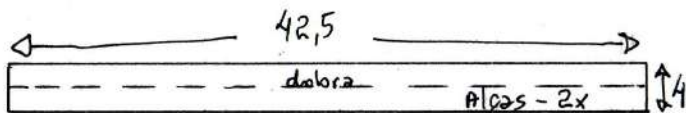
Zíper removível = 18 cm.



*Mayana Silva*

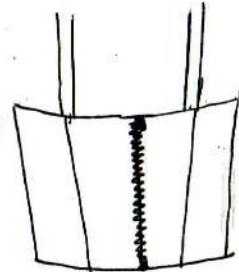
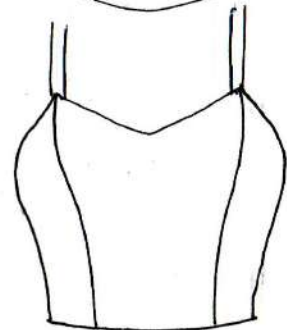


Moldé sem  
= margem de  
= costura =

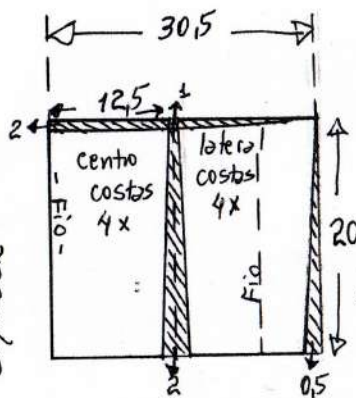
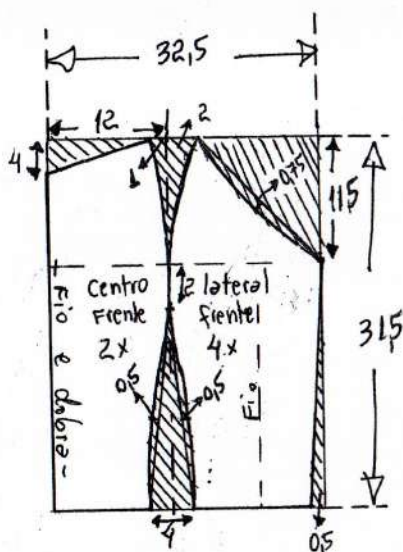


Tecido = 80 cm de tricoline, crepe, lyocel,  
linho, denim, chambrey...

Corpete decote coração  
Plus size 52

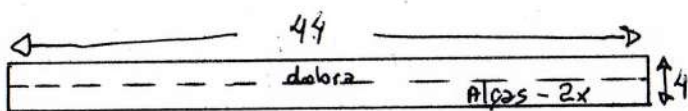


Zíper removível = 18 cm.



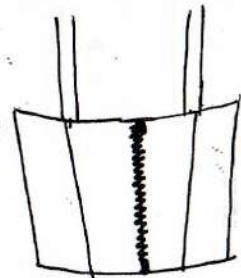
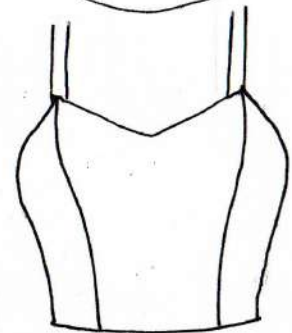
*Maqueline*

Moldé sem  
margem de  
costura

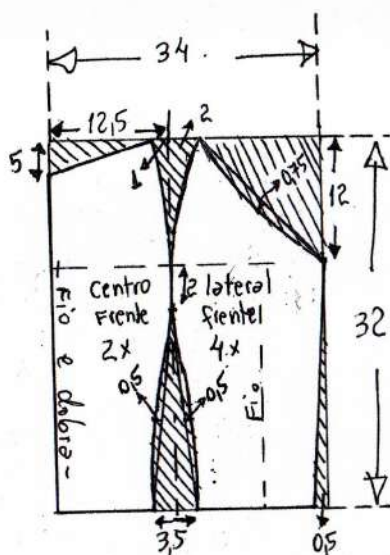


Tecido = 80 cm de tricoline, crepe, lycel,  
linho, denim, chambrey...

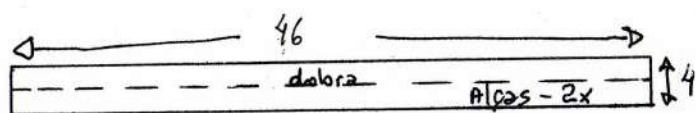
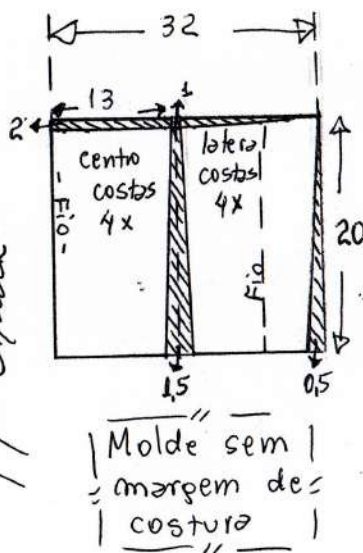
Corpete decote coração  
Plus size 54



Zíper removível = 18 cm

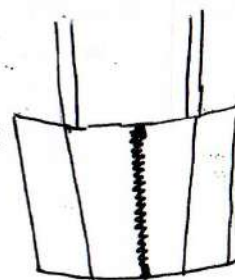
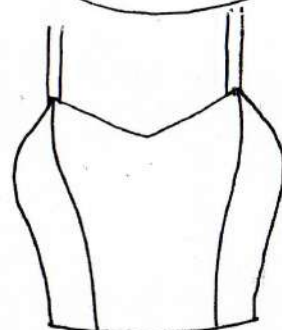


*Maqueline*



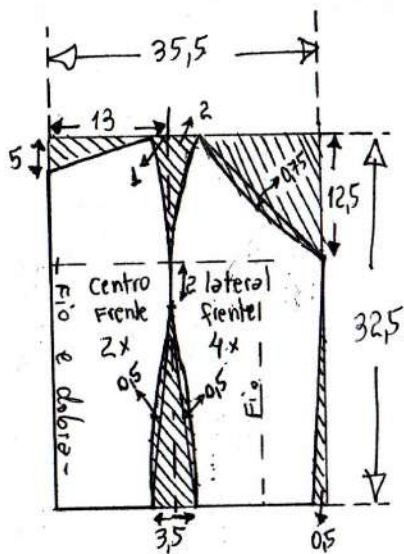
Tecido = 90 cm de tricoline, crepe, lyocel, linho, denim, chambrey...

Corpete decote coração  
Plus size 56

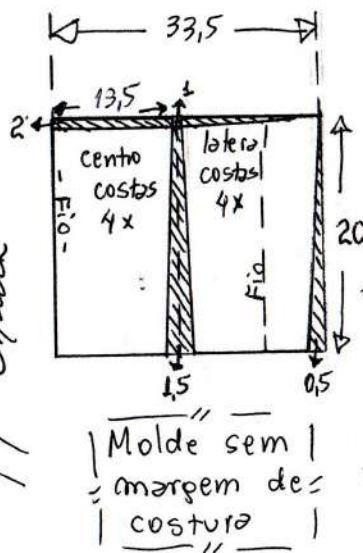


Zíper removível = 18 cm..

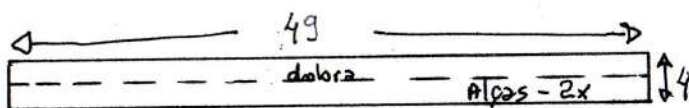




*Mayane Silva*

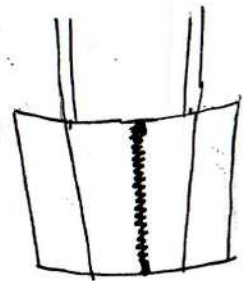
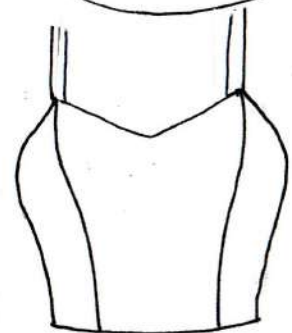


Molde sem  
margem de  
costura



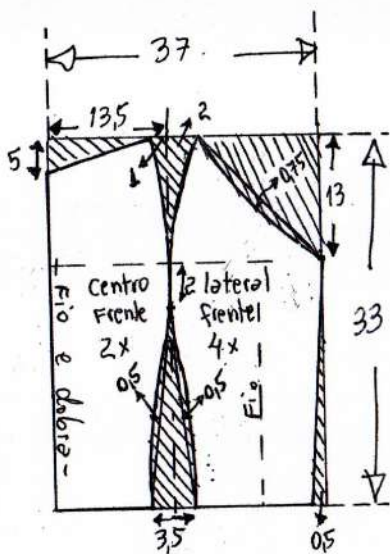
tecido = 90 cm de tricoline, crepe, lycel,  
linho, denim, chambrey...

Corpete decote coração  
plus size 58

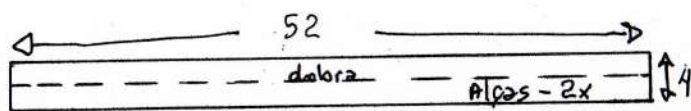
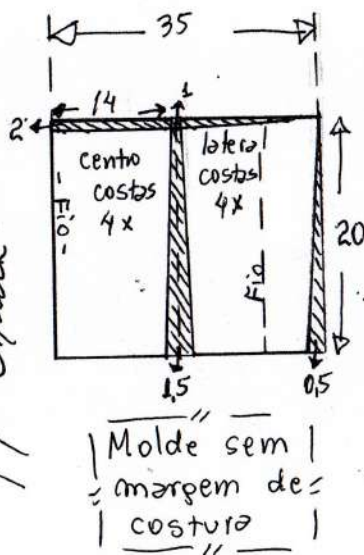


Zíper removível = 18 cm



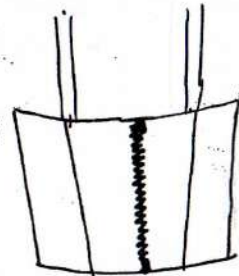
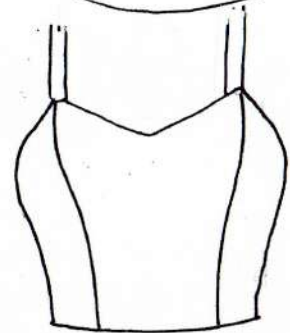


*Maqueline Silva*

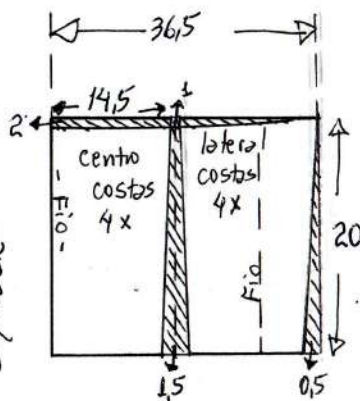
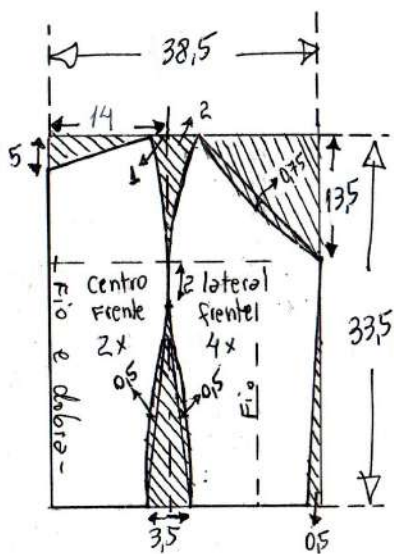


Tecido = 90 cm de tricolme, crepe, lycel, linho, denim, chambroy...

Corpete decote coração  
Plus size 60

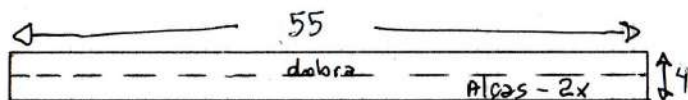


Zíper removível = 18 cm..



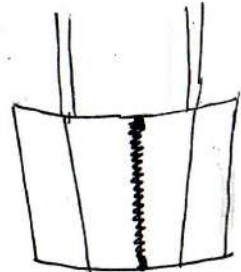
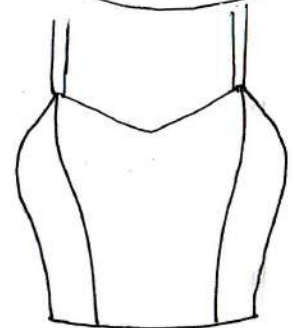
*Maylene Silva*

Molde sem  
margem de  
costura



Tecido = 90 cm de tricoline, crepe, lycel,  
linho, denim, chambrey...

Corpete decote coração  
plus size 62



Zíper removível = 18 cm.