



PANDA RESTAURANT GROUP INC.  
1683 Walnut Grove Ave.  
Rosemead, California  
91770  
Telephone: 626.799.9898  
Facsimile: 626.372.8288

All ideas, designs, arrangement and plans indicated or represented by this drawing are the property of Panda Express Inc. and were created for use on this specific project. None of these ideas, designs, arrangements or plans may be used by or disclosed to any person, firm, or corporation without the written permission of Panda Express Inc.

REVISIONS:

ISSUE DATE:

PERMIT SET 07-07-2017

DRAWN BY: G. COLLINS

PANDA PROJECT #: D5379  
ARCH PROJECT #: JCDT17-0081



12/21/2017

NORR  
ARCHITECTS ENGINEERS PLANNERS

PANDA EXPRESS  
WARM & WELCOME 2200  
23171-23191 THREE NOTCH ROAD TENANT - 4F  
CALIFORNIA, MD, 20169

E-102

SECURITY CAMERA PLAN

TRUE WARM & WELCOME 2200

PULL STRING/WIRE:  
TEMPORILY TIE STRING OFF TO  
STRUCTURE FOR FUTURE  
CABLE VENDOR.

1/2" CONDUIT. ANCHOR TO  
STUD/FRAMING MEMBER WITH  
CONDUIT CLAMP. STUB UP  
TO A MINIMUM OF 6" ABOVE  
ADJACENT CEILING - U.N.O.

STUB CONDUIT THROUGH  
EXTERIOR WALL. END OF  
CONDUIT TO BE FLUSH WITH  
ARCHITECTURAL FINISH.  
CONDUIT STUB ONLY. DO NOT  
PROVIDE JUNCTION BOX ON  
EXTERIOR OF BUILDING.

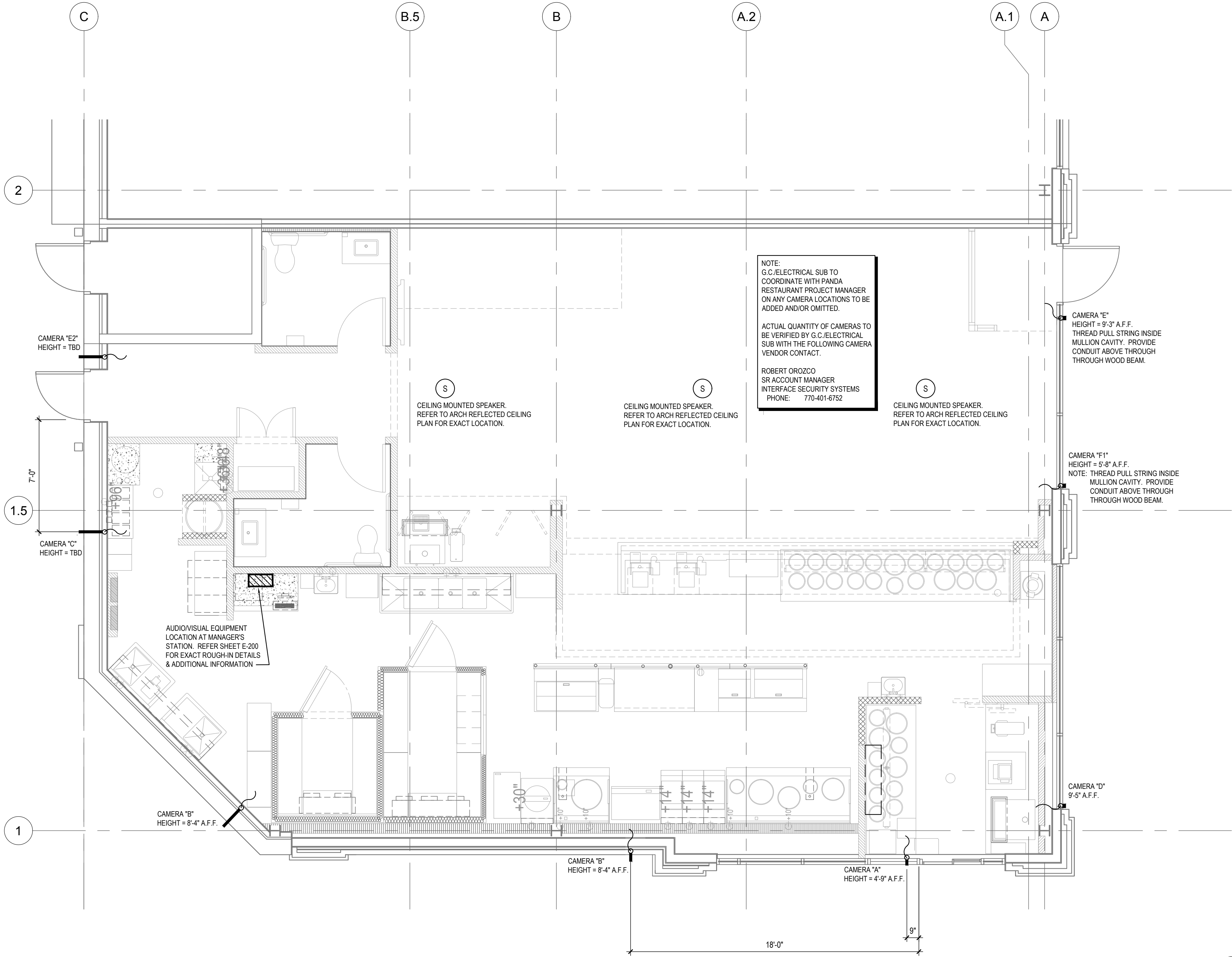
REFER PLAN

CONDUIT ROUGH-IN DETAIL

2

NOT TO SCALE

E-102



SECURITY CAMERA PLAN

1

Scale= 1/4" = 1'-0"

E-102