

# CORNER RECORD

Agency Index

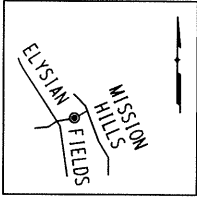
BOOK 105 PAGE 74

Document Number

CR 10989

City of OAKLANDCounty of ALAMEDA, California

Brief Legal Description

CITY OF OAKLAND MONUMENT AS SHOWN UPON MONUMENT MAP 1527B464\_106 AND TRACT 3747  
(93-MAPS-52) 92' EASTERLY OF THE INTERSECTION OF ELYSIAN FIELDS DRIVE AND MISSION HILLS.**CORNER TYPE**Government Corner ☐ Control  
Meander ☐ Property  
Rancho ☐ Other**COORDINATES (Optional)**N. 2106209.6 ± E. 6090830.1 ±☒ ElevationUnits Metric ☐ U.S. Survey Foot ☒Horizontal Datum CCS 83Zone 3 Epoch Date

Vertical Datum

Date of Survey 1/18/2018☐ Complies with Public Resources Code §§8801-8819☐ Complies with Public Resources Code §§8890-8902PLS Act Ref: ☐ 8765(d)☒ 8771☐ 8773☐ Other:Corner/  
Monument: ☒ Left as found☐ Established☐ Rebuilt☒ Pre-Construction☐ Found and tagged☐ Reestablished☒ Referenced☐ Post-Construction

Narrative of corner identified and monument as found, set, reset, replaced, or removed:

☒ See sheet #2 for description (s):

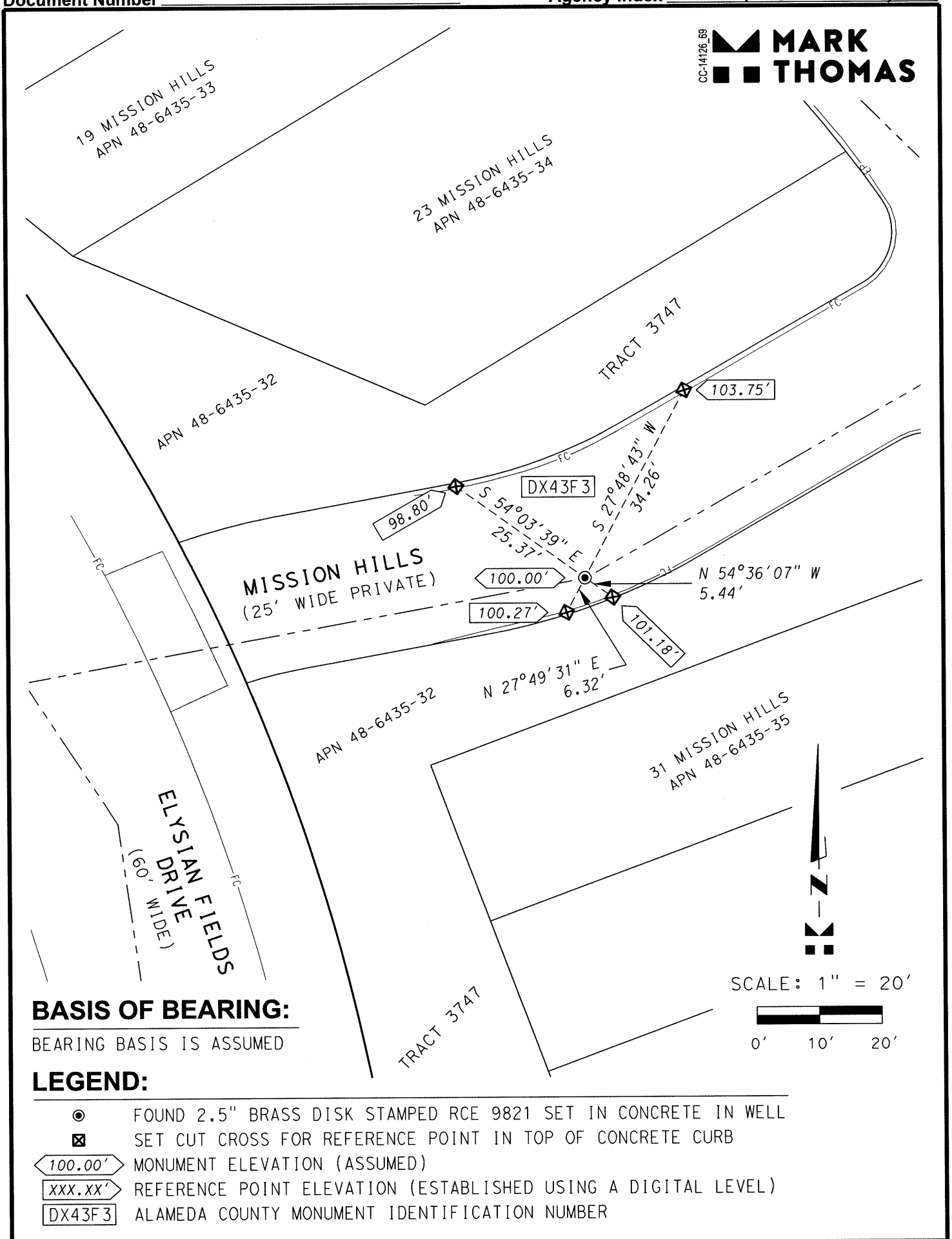
FOUND MONUMENT THAT COULD BE DAMAGED OR DESTROYED BY A PROPOSED GAS LINE CONSTRUCTION PROJECT. MONUMENT WAS REFERENCED AS SHOWN ON PAGE 2 OF 2.

THE PURPOSE OF THIS CORNER RECORD IS TO PRESERVE THE LOCATION OF THE MONUMENT PRIOR TO CONSTRUCTION. NO ATTEMPT WAS MADE TO DETERMINE THE RELATIONSHIP BETWEEN THE MONUMENT AND PROPERTY LINES, RIGHT-OF-WAY LINES, CENTERLINES OR OTHER MONUMENTS.

**SURVEYOR'S STATEMENT**This Corner Record was prepared by me or under my direction in conformance with  
the Professional Land Surveyors' Act on MARCH 6, 2018Signed Erik Paul Kiel P.L.S. or R.C.E. No. 8911**COUNTY SURVEYOR'S STATEMENT**This Corner Record was received 25 JANUARY 2018and examined and filed 21 MARCH 2018Signed Michael Rubner P.L.S. or R.C.E. No. 6843Title COUNTY SURVEYOR

County Surveyor's Comment

CC-14126.B9  
**MARK THOMAS**



**BASIS OF BEARING:**

BEARING BASIS IS ASSUMED

**LEGEND:**

- FOUND 2.5" BRASS DISK STAMPED RCE 9821 SET IN CONCRETE IN WELL
- ⊠ SET CUT CROSS FOR REFERENCE POINT IN TOP OF CONCRETE CURB
- 100.00' MONUMENT ELEVATION (ASSUMED)
- XXX.XX' REFERENCE POINT ELEVATION (ESTABLISHED USING A DIGITAL LEVEL)
- DX43F3 ALAMEDA COUNTY MONUMENT IDENTIFICATION NUMBER