

BEST MANAGEMENT PRODUCTS, INC.
The SNOUT® INSTALLATION INSTRUCTIONS
U.S. Patent # 6126817 Canadian Patent #2285146



PRODUCT NAME

The SNOUT® Oil-Water-Debris Separator
U. S. Patent # 6126817, 7951294, 7857966, 8512556 others pending
Canadian Patent # 2285146, 2688912, 2690156 others pending

MANUFACTURER

Best Management Products, Inc.
53 Mt. Archer Rd.
Lyme CT 06371
Phone: (800) 504-8008
Fax: (410) 687-6757
E Mail: tjm@bmpinc.com
Web site: <http://www.bmpinc.com>

PRODUCT DESCRIPTION

Basic Application: The SNOUT® Oil-Water-Debris Separator is a patented plastic composite hooded outlet cover that attaches to the wall of a stormwater catch basin or other water-quality structure over the outlet pipe in such a manner as to prevent the exit of floating debris and oil.

Composition and Materials: The SNOUT® is hand fabricated from marine grade fiberglass. The attachment hardware is 18-8 stainless steel, the anti-siphon device is schedule 40 PVC and the access hatch is ABS plastic. These materials have proven to be extremely durable and maintenance free. The SNOUT® is adaptable to any type catch basin construction and is available in flat or curved back styles.

INSTALLATION (Structure wall to be finished smooth, flush and free of loose material)

1. Select the SNOUT® Oil-Water-Debris Separator of size and configuration to fit application. (Our SNOUTS are numbered to reflect that they will fit over a pipe with an **outside diameter** less than that number. For example: An 18 series SNOUT® will fit over a pipe **with an O.D. less than 18"**. Select F for flat-walled structures and R for round-walled structures.) The SNOUT size must be larger than pipe size.

53 Mt. Archer Rd. Lyme CT 06371 800-504-8008 410-687-6757 fax

1/25/2014

BEST MANAGEMENT PRODUCTS, INC.
The SNOUT® INSTALLATION INSTRUCTIONS
U.S. Patent # 6126817 Canadian Patent #2285146

2. Center the SNOUT® directly over the exit pipe so that the entire pipe is covered and so that the lower edge of the hood is **at least** 1/2 the pipe diameter below the lowest inside point of the pipe (deeper is even better.)

3. Drill * equally spaced 7/16" holes through the SNOUT® flange. (*Number of holes vary depending on size of SNOUT®.)

4. Mark and drill catch basin and install the lamp-in lead anchors.
 - (1) Drill a 3/4" hole into the base material to the required depth (approximately 1-1/4" deep.)
 - (2) Blow the hole clean of dust and other material.
 - (3) Insert the anchor into the hole. Narrow end of cone must point out, lead shield slides over cone.
 - (4) Position the setting tool or a 9/16" socket against the anchor outer cone. (The outer rim of the tool or socket should seat onto the lead shield rim.) Set the anchor by driving the lead sleeve over the cone using several **sharp** hammer blows. Be sure the anchor is at the required embedment depth (flush or slightly below face of concrete)

5. Attach the vent pipe adapter in the pre-drilled hole in the top of the SNOUT® using the 2 flat O ring gaskets and PVC lock-nut supplied in the kit. Install with female slip adapter up and a washer on each side of the SNOUT® shell. Tighten lock-nut hand tight.

6. Remove PSA backing and with firm pressure, attach gasket strip(s) to back of flange and trim excess.

7. Attach the SNOUT® to the catch basin wall with 3/8" diameter stainless steel bolts in lead expansion anchors. Do not over tighten; 10-15 foot-pounds should be sufficient.

8. Cut the anti-siphon vent stack to length and attach to hood at slip adapter with PVC cement.

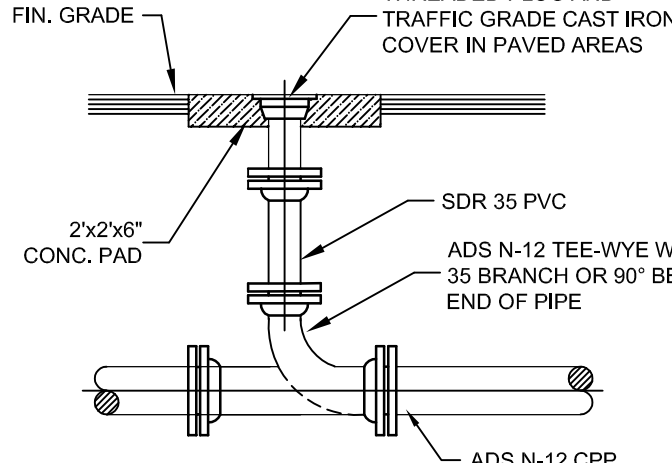
9. Attach 90 degree fitting to vent stack with PVC cement. Ensure that fitting opening is accessible for maintenance and inspection.

snout® Installation Kit Items included with each SNOUT® (Number and sizes will vary with size of SNOUT®)
() 3/8" expansion anchor assemblies (anchors, stainless bolts & stainless washers)
(1) 1" or 2" female pipe adapter
(2) Neoprene O rings
(1) PVC lock-nut
() PSA backed gasket strip(s)
(1) 1" or 2" diameter 12" length PVC pipe
(1) 90 degree elbow

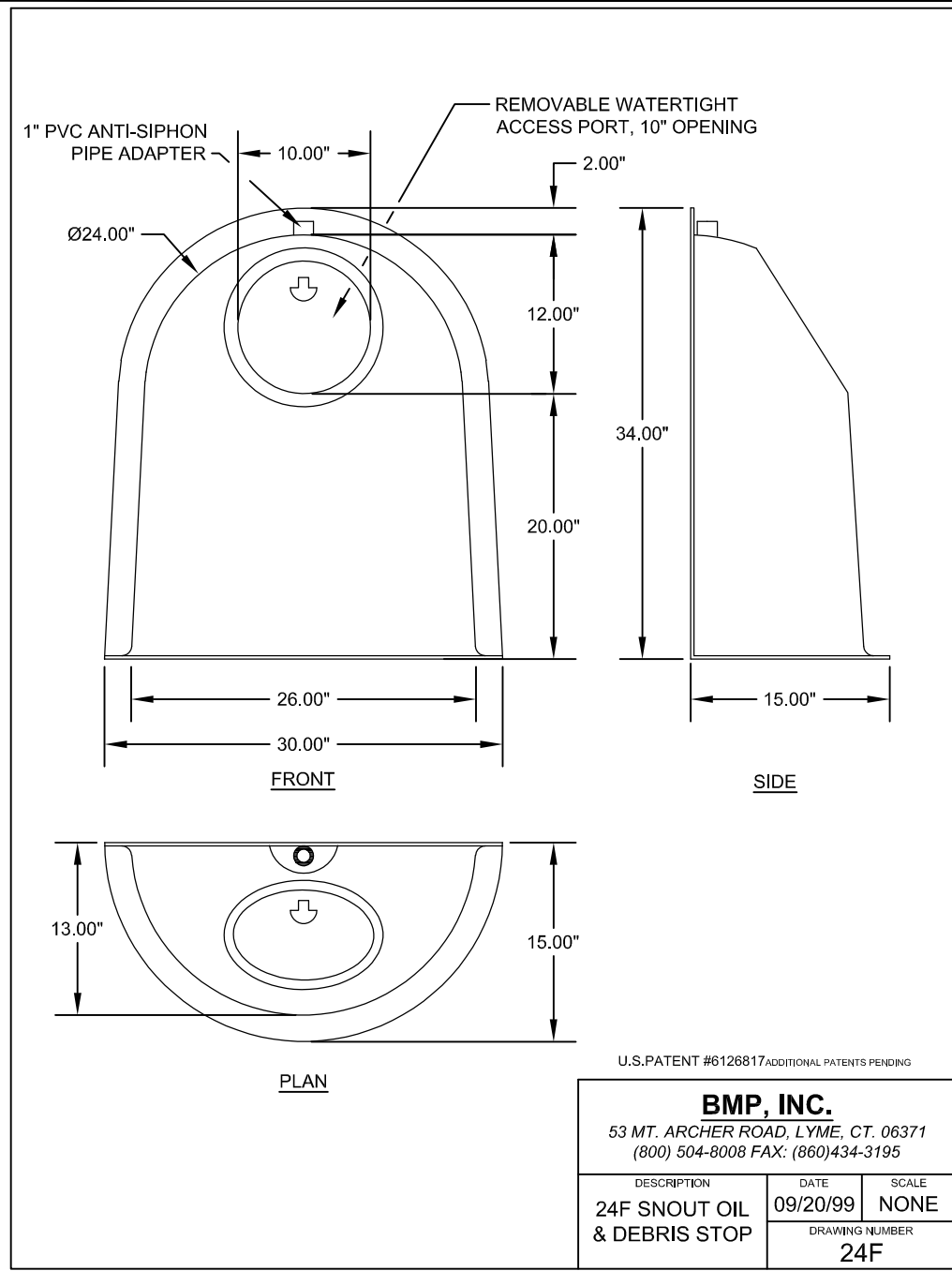
53 Mt. Archer Rd. Lyme CT 06371 800-504-8008 410-687-6757 fax

1/25/2014

NOTE:
IN GRASS AREAS WHERE NO PAVEMENT IS PROPOSED, CONCRETE BLOCK SHALL NOT BE CONSTRUCTED.



2 PRIVATE STORM SEWER CLEANOUT
N.T.S.



6 SNOUT DETAIL
NTS

BMP, INC.			
53 MT. ARCHER ROAD, LYME, CT 06371			
(800) 504-8008 FAX: (860) 684-3195			
DESCRIPTION	DATE	SCALE	
24F SNOUT OIL & DEBRIS STOP	09/20/99	NONE	
DRAWING NUMBER	24F		

BEST MANAGEMENT PRODUCTS, INC.
The SNOUT® INSTALLATION INSTRUCTIONS
U.S. Patent # 6126817 Canadian Patent #2285146

- (e) Insert your pre-slotted standpipe into the sleeve in the Flow Restrictor base so that the bottom (inlet) of the pipe is at least 1/2 the outlet pipe diameter below the lowest inside point of the outlet (min. of 6" below plate.) Secure the standpipe with a rubber coupler (FERNCO type).

Flow Restrictor Basic Kit

- (1) Flow Restrictor
- (1) PSA backed gasket strip(s)
- (5) 1" X 1/4" stainless steel bolts
- (5) 1/4" stainless steel lock-nuts

Also Required

- (1) size x size rubber coupler (FERNCO type)
- (1) PVC pipe

MAINTENANCE

The catch basin should be emptied of debris and the accumulated solids removed as required by site conditions or at least once a year. BMP recommends scheduling maintenance when sump is half full, or six inches of floatable pollutants accumulate on the surface. The SNOUT® itself requires no real maintenance other than routine inspection and rinsing with a hose or pressure washer during the cleaning sequence of the catch basin and flushing the anti-siphon vent with water or air to verify that it is clear.

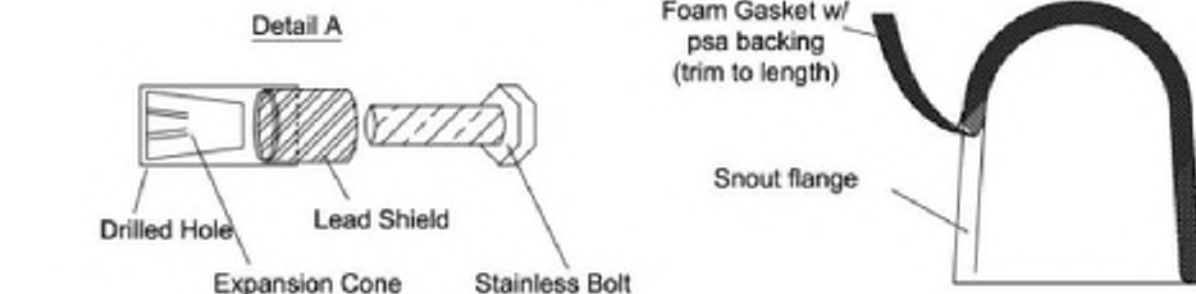
TECHNICAL SUPPORT

For technical consultation or additional information, and for custom design and fabrication services, please contact
T.J. Mullen at (800) 504-8008 (tjm@bmpinc.com)

Visit our web site at: <http://www.bmpinc.com>

53 Mt. Archer Rd. Lyme CT 06371 800-504-8008 410-687-6757 fax

1/25/2014



53 Mt. Archer Rd. Lyme CT 06371 800-504-8008 410-687-6757 fax

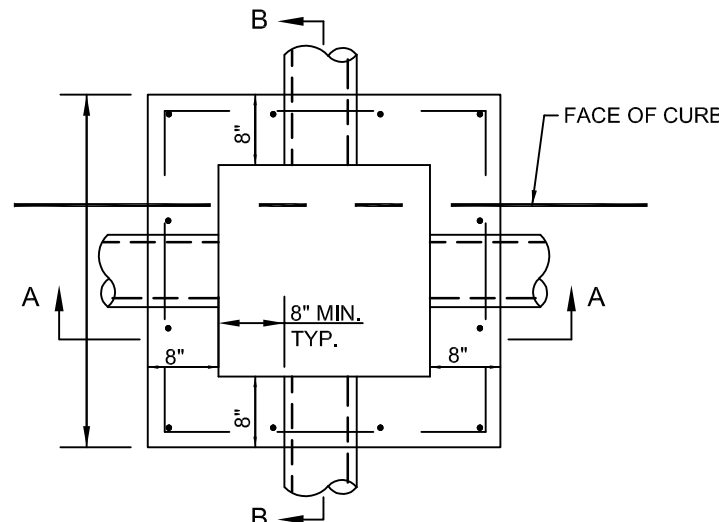
1/25/2014

NOTE:

1. STORM WATER CURB INLET/AREA INLET TO HAVE ENVIRONMENTAL MESSAGE STAMPED INTO THE METAL DUMP NO WASTE,"DRAINS TO STREAM".

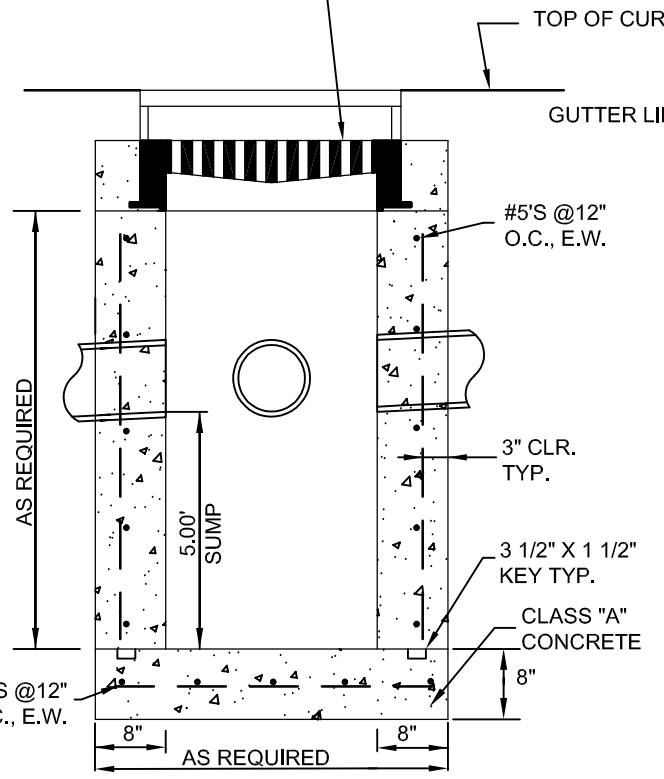
2. THE CONTRACTOR SHALL POUR THE INVERTS IN ALL STORM WATER STRUCTURES.

3. OPTIONAL CONSTRUCTION PRE-FAB. CONCRETE EQUIVALENT.

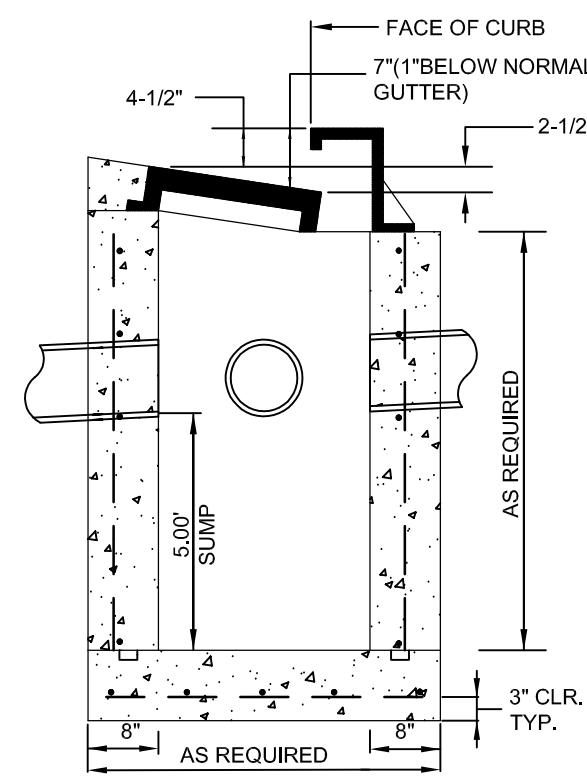


RAMP PLAN VIEW

FRAME & GRATE FOR CURB INLET TO BE JOHN BOUGHARD & SONS NO. 3300-V



SECTION A-A

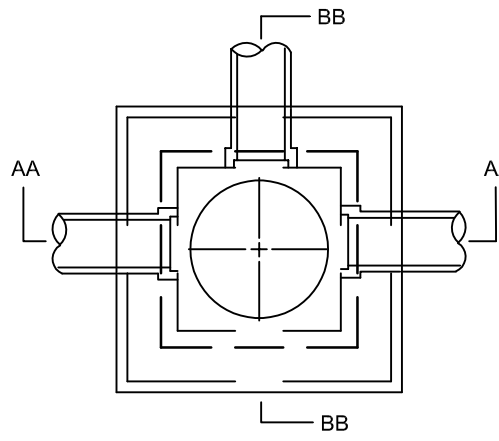


SECTION B-B

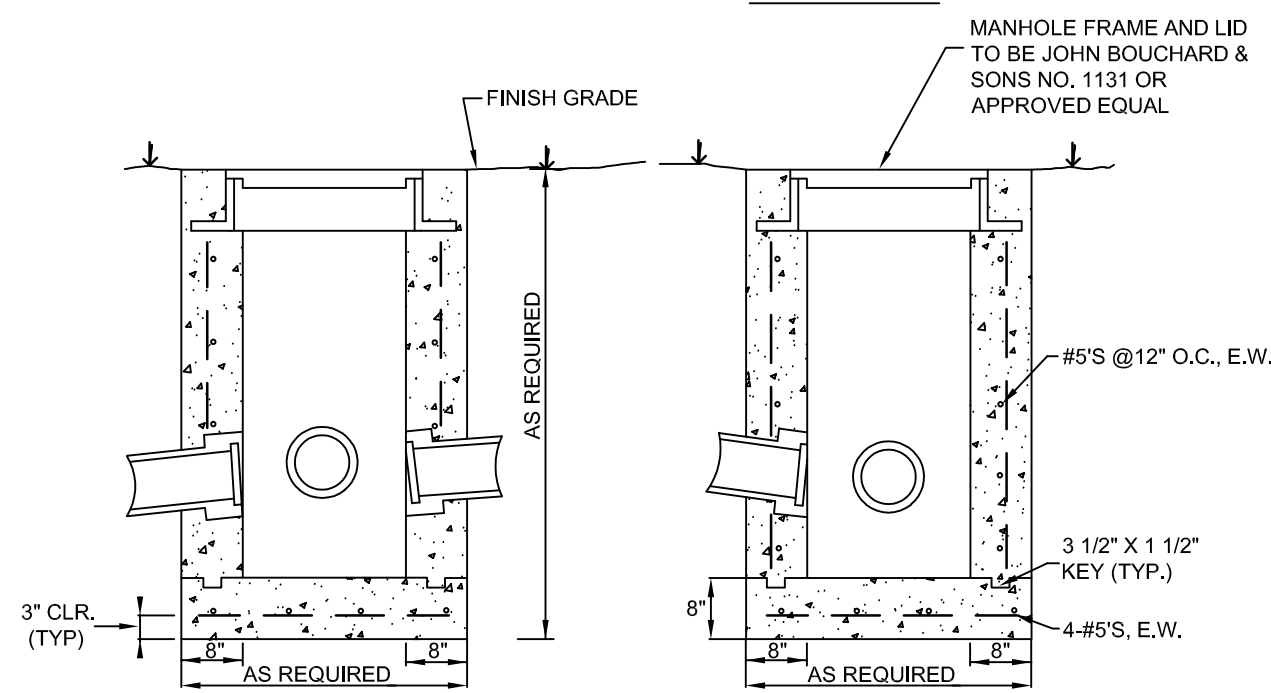
3 SINGLE CURB INLET WITH SUMP
N.T.S.

NOTE:

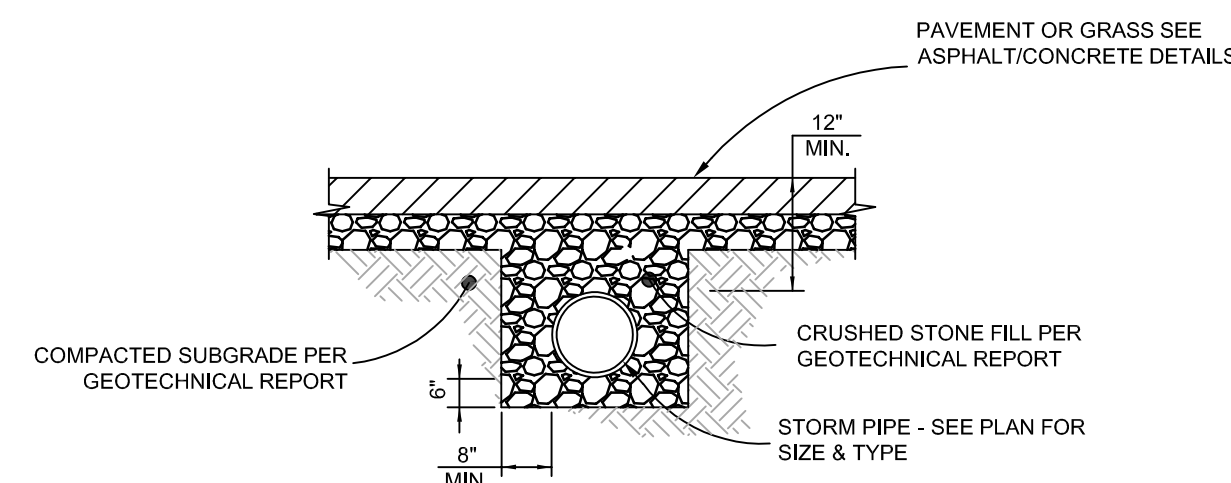
OPTIONAL CONSTRUCTION MATERIALS INCLUDE CAST-IN-PLACE CONCRETE OR PRE-FAB. CONCRETE.



PLAN VIEW



4 JUNCTION BOX
N.T.S.



5 STORM SEWER PIPE TRENCH DETAIL
N.T.S.



PANDA EXPRESS, INC.
1683 Walnut Grove Ave.
Rosemead, California
91770

Telephone: 626.799.9898
Facsimile: 626.372.8288

All ideas, designs, arrangement and plans indicated or represented by this drawing are the property of Panda Express Inc. and were created for use on this specific project. None of these ideas, designs, arrangements or plans may be used by or disclosed to any person, firm, or corporation without the written permission of Panda Express Inc.

REVISIONS:

ISSUE DATE:

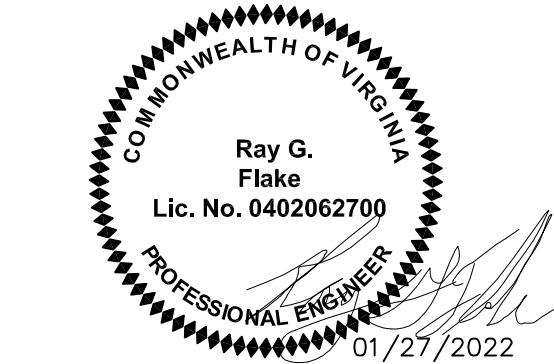
1	PERMIT/BID SET	02-12-21
2	CITY COMMENTS	08-17-21
3	CITY COMMENTS	10-22-21
4	CITY COMMENTS	12-15-21
5	CITY COMMENTS	01-27-22
	ISSUE FOR BID (DT)	02-04-22

DRAWN BY: LEB

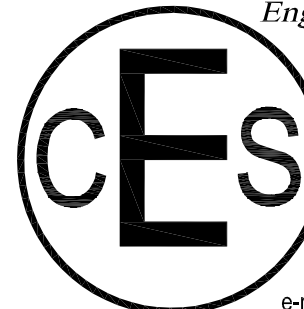
PANDA PROJECT #: S8-21-D8164

PANDA STORE #: D-8164

ARCH PROJECT #: XXXX-XXX



Civil Engineering Services
Engineering, Land Planning,
and Environmental



7705 Spicer Farm Lane
Fairview, Tennessee
37062
Phone: (615) 533-0401

e-mail: ray@civilengineeringservices.net

PANDA EXPRESS

TRUE WARM AND WELCOME
6104 JEFFERSON AVENUE
NEWPORT NEWS, VA 23605

**GRADING DETAIL
SHEET**

C05.2

TRUE WARM & WELCOME 2300 R2